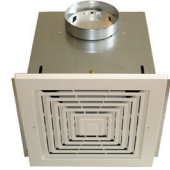




# Residential / Light Commercial Fans



**TD • PV • SWF • PC • FF/FFC**

*Advancing Ventilation*



# MODEL TD-MIXVENT

## INLINE MIXED FLOW DUCT FAN



### **MODEL FEATURES**

- Exhaust air up to 2,630 CFM with static pressure capabilities to 1” w.g.
- Mixed flow impeller for excellent air flow to pressure performance ratio
- Ideal for applications where space is limited
- AMCA Seal for Air Performance
- cULus Listed

### **MODEL OVERVIEW**

#### **Compact Size-TD Fans require minimum space**

The S&P TD-MIXVENT & TD-SILENT series of in-line duct fans have been specially designed to maximize the airflow performance with minimal noise levels within the smallest and most compact of housing sizes. This makes the TD-MIXVENT & TD-SILENT series the ultimate solution for small to medium sized ventilation installations which require a high airflow to pressure ratio and occupy only the minimum space possible. Example: false ceiling voids, cabinets and many other limited space environments.

#### **Easy to Install...fit and forget!**

All the models in the TD-MIXVENT & TD-SILENT range have been designed with the professional contractor/engineer in mind. All models include a “removable body” feature that enables the motor-impeller assembly to be completely removed or replaced without the need to interfere with the attached ducting.

#### **Multitude of features-high specification**

All models within the TD-MIXVENT & TD-SILENT range incorporate a powerful mixed flow impeller and internal air vanes located at the discharge end of the fan housing. This impeller and guide vane combination provides a smooth laminar air flow which in turn minimizes turbulence and noise, and generates an **excellent air flow to pressure performance ratio**.

#### **Description**

All of the TD-fans include the combination of a powerful motor, factory installed, to a mixed flow impeller. This motor and impeller combination enables the TD-fans to deliver high airflow performances with minimum noise generation against high static pressures typically found in ducted ventilation systems. The unique design of the support brackets, allows the motor and impeller assembly to be fitted or removed without dismantling the adjacent ducting and therefore, facilitating any installation or maintenance. The internal aerodynamic design of the TD-MIXVENT & TD-SILENT fans enable the units to generate large air volumes and pressures with the minimum of in-duct or radiated noise. The TD-fans offer the ideal in-line duct fan solution for a wide range of HVAC ventilation applications.



Model TD-MIXVENT is available in our Quickship program. All sizes are available for next day shipping from stock.



#### **5 year fan housing and motor warranty**

All specifications are subject to change without notice unless approved in submittal by S&P



# General Details of the TD-MIXVENT Range



**Low profile** mixed flow fans, manufactured in plastic material (up to model 150) or in **galvanized steel** sheet protected with Epoxy paint (models 200, 250, 315, 355, and 400), with external terminal box, removable motor-impeller assembly and adjustable single-phase motor, Class B, IP44.



## Construction characteristics

	100	100x1	125	150	200	250	315	355	400
Polypropylene housing	•	•	•	•					
Steel housing with epoxy coating					•	•	•	•	•
ABS fan blades	•	•	•	•					
Aluminum fan blades					•	•	•	•	•
Thermal link via fuse	•								
Thermal link with automatic reset		•	•	•	•	•	•	•	•
Permanently lubricated ball bearings	•	•	•	•	•	•	•	•	•

The extensive range of the TD-MIXVENT series makes it an effective solution for a wide range of residential and light commercial ventilation installations.

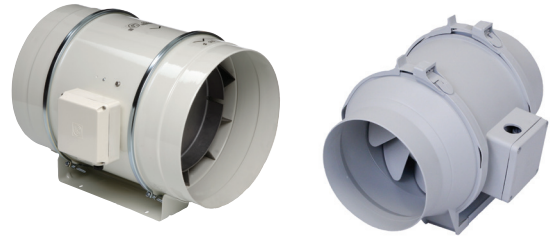
## ACCESSORIES



Please refer to the S&P Group A (Residential/Light Commercial) catalog for a complete line of accessories.



## **CONSTRUCTION/SPECIFICATION CHECKLIST**



### **Warranty**

**Five (5) year limited warranty.**

### **Range**

The TD-MIXVENT series consists of nine (9) nominal sized in-line fans. All models are specifically designed for direct connection in-line with industry standard diameter round ducting.

### **Construction**

The TD-MIXVENT models 100, 100x1, 125, and 150 are manufactured in tough reinforced plastic, models 200, 250, 315, 355, and 400 have a metal casing and are finished in a tough epoxy-polyester paint coating. The TD fan duct connection flanges are manufactured from reinforced plastic, except for models 200, 250, 315, 355, and 400 which are constructed from epoxy-polyester coated metal.

**TD 250 and 315 are UL listed for outdoor use.**

**TD 355 and 400 are UL 507 and UL 705 certified.**

### **Impellers**

The impeller blades for models 100, 100x1, 125, and 150 are molded in tough ABS plastic. Models 200, 250, 315, 355, and 400 are metal.

### **Long Life**

Permanently lubricated motors are engineered for trouble-free continuous operation for 40,000 hours.

### **Motors**

*Models 100, 100x1 and 125 :*

- Single-phase, 120V 60Hz, shaded pole induction asynchronous motor in die cast aluminum. All motors include direct single speed connection and are also suitable for voltage speed control.
- Class II electrical insulation (model 100) & Class I (models 100x1 and 125)
- IP 44 Protection
- Safety auto reset Thermal Overload Protection (fuse type)
- Self-lubricating sleeve bearings.
- Sizes 100-125: Suitable for working airstreams up to 104°F (40°C)

*Models 150, 200, 250, 315, 355, and 400:*

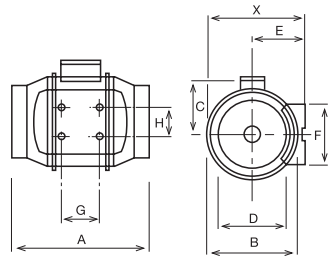
- Single-phase induction asynchronous motor, with permanent capacitor and external rotor constructed of die cast aluminum. Models 150, 200, 355 and 400 feature single speed, fully speed controllable motors. Models 250 and 315 include direct dual speed (LS/HS) connection motors and are also suitable for voltage speed control.
- Class I electrical insulation
- IP 44 Protection
- Thermal Overload Protection
- Sealed For Life, ball bearings
- Size 200: Suitable for working airstreams up to 104°F (40°C)
- Sizes 150, 250-400: Suitable for working airstreams up to 140°F (60°C)



# PERFORMANCE/DIMENSIONS

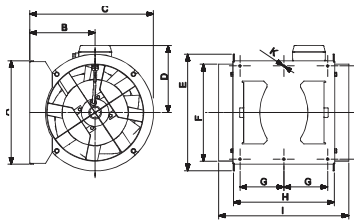
## Dimensions (inches/mm)

### Models 100 - 315



Model	X	A	B	C	D	E	F	G	H
TD-100	5 15/16 151	9 1/8 232	5 7/16 138	3 3/4 96	3 7/8 98	3 1/4 82	3 3/4 95	1 7/8 48	2 1/16 52
TD-100X1	7 3/8 188	11 15/16 303	6 15/16 176	4 1/2 115	3 13/16 97	3 15/16 100	3 9/16 90	3 1/8 80	2 3/8 60
TD-125	7 3/8 188	10 3/16 258	6 15/16 176	4 1/2 115	4 13/16 123	3 15/16 100	3 9/16 90	3 1/8 80	2 3/8 60
TD-150	8 3/8 212	11 5/8 295	7 7/8 200	5 127	5 13/16 147	4 7/16 112	5 1/8 130	3 1/8 80	2 3/8 60
TD-200	9 3/16 233	11 7/8 302	8 9/16 217	5 9/16 141	7 13/16 198	4 7/8 124	5 1/2 140	3 15/16 100	3 11/16 94
TD-250	11 7/16 291	15 3/16 386	10 11/16 272	7 9/16 192	9 3/4 248	6 1/8 155	6 5/8 168	5 11/16 145	5 1/2 140
TD-315	14 356	17 11/16 450	13 1/4 336	8 13/16 224	12 5/16 312	7 3/8 188	8 1/4 210	7 3/16 182	7 178

### Models 355 & 400



Model	A	B	C	D	E	F	G	H	I	J	K
TD-355	14 13/16 376	9 3/8 238	17 3/4 451	8 13/16 224	16 3/4 425	13 15/16 354	6 5/16 160	14 1/2 368	18 11/16 475	13 3/8 340	5/16 8
TD-400	16 407	9 13/16 249	19 3/8 492	10 1/2 267	19 3/16 487	15 11/16 398	6 5/16 160	16 3/4 425	21 1/2 546	14 9/16 370	5/16 8

## Performance characteristics

Models 100 up to 315 include a direct two speed motor connection.

Model	Nom. RPM	Volts	Max. Watts	Speed	CFM v Static Pressure (SP) Ins. WG							Max. SP	Max operating temp. (°F)	Wgt. (lbs)	Duct Dia. Ins.
					0"	0.125"	0.25"	0.375"	0.5"	0.75"	1.0"				
TD-100	2516	120	26	-	101	85	57	-	-	-	-	.4	104	4	4"
TD-100X1	2500	120	29	-	138	119	96	66	21	-	-	.45	104	6	4"
TD-125	2146	120	38	-	197	168	133	86	22	-	-	.55	104	6	5"
TD-150	2289	120	65	-	293	273	250	227	206	131	35	1.15	140	9	6"
TD-200	2781	120	184	-	538	495	458	418	367	190	10	1.625	104	13	8"
TD-250	2400	120	162	LS	541	475	418	355	295	218	170	2.03	140	21	10"
	3200	120	241	HS	754	715	680	640	606	520	405	2.53	140	21	10"
TD-315	2000	120	208	LS	751	670	545	420	285	190	130	1.62	140	31	12.4"
	2500	120	335	HS	1050	990	932	850	770	600	420	2.95	140	31	12.4"
TD-355	1400	120	464	-	2089	2013	1934	1855	1775	1591	1306	1.0	140	68	14"
TD-400	1400	120	756	-	3124	3032	2936	2836	2733	2505	2210	1.2	140	78	16"

Performance certified is for installation Type D: Ducted Inlet, Ducted Outlet. Performance ratings do not include the effects of appurtenances.

LS= Low Speed  
 HS = High Speed



S&P USA Ventilation Systems, LLC., Div. of Soler & Palau Ventilation Group, certifies that the TD range shown herein is licensed to bear the AMCA Seal. The ratings shown are based on tests and procedures performed in accordance with AMCA Publication 211 and comply with the requirements of the AMCA Certified Ratings Program.



TD Models 100X1, 125, 150, and 200 are ENERGY STAR® qualified.



The TD-MIXVENT Models are California Title 24 compliant and meet ASHRAE 62.2 when installed with a 3 way switch and remotely mounted speed control.



TD 250 & 315 are UL listed for outdoor use.

## Sound characteristics

Fan sound levels are measured in sones. At this time there are no sone level test standards available through HVI due to the fact that remote mounted fan noise levels are in proportion to the following: type of duct, length of duct, fan distance from the intake source and other miscellaneous factors. However, it is generally accepted that remote mounted venting is usually quieter than standard (in room) venting.



# KIT - TD BATHROOM EXHAUST KITS

## FEATURING TD-MIXVENT FANS



The TD-MIXVENT fan kits provide all the hardware needed to complete a simple in-line ducted ventilation installation. The kit includes a powerful TD in-line fan and exterior and interior grilles (with or without lights). Available in both Standard Exhaust Kits, for venting a single location, and Deluxe Exhaust Kits, for venting multiple locations with one fan.

The TD-MIXVENT fan kit is the ideal solution for any simple in-line ducted fan installation.

**All TD kits have standard 7-year warranty\***

### Standard Exhaust Kits - Single Vent



#### KIT-TD100

- 1 TD100 exhaust fan
- 1 plastic round grille (PG-100)
- 1 exterior louvered grille (PER-100W)
- Integral mounting bracket

#### KIT-TD100X1

- 1 TD100X1 exhaust fan
- 1 plastic round grille (PG-100)
- 1 exterior louvered grille (PER-100W)
- Integral mounting bracket

#### KIT-TD150

- 1 TD150 exhaust fan
- 1 plastic round grille (PG-150)
- 1 exterior louvered grille (PER-150W)
- Integral mounting bracket

### Deluxe Exhaust Kits - Dual Vent



#### KIT-TD150-DV

- 1 TD150 exhaust fan
- 2 plastic round grilles (PG-150)
- 1 exterior louvered grille (PER-150W)
- 1 Y-fitting (SY-6)
- Integral mounting bracket

**IMPORTANT:** If venting in an non-insulated attic space, or in a cold climate, insulated flexible duct is strongly recommended for condensation issues.

\*Bulbs in Lighted Kits not included in warranty



#### KIT-TD100X1L

- 1 TD100X1 exhaust fan
- 1 Vent Light with LED Bulb (VLED-100)
- Integral mounting bracket

#### KIT-TD100X1H

- 1 TD100X1 exhaust fan
- 1 Vent Light with Halogen Bulb (VLH-100)
- Integral mounting bracket

#### KIT-TD100X1F

- 1 TD100X1 exhaust fan
- 1 Vent Light with Fluorescent Bulb (VLF-100)
- Integral mounting bracket

### Lighted Deluxe Exhaust Kits - Dual Vent



#### KIT-TD150L

- 1 TD150 exhaust fan
- 2 Vent Lights with LED Bulb (VLED-100)
- 1 Y-fitting (SY44-6)
- Integral mounting bracket

#### KIT-TD150H

- 1 TD150 exhaust fan
- 2 Vent Lights with Halogen Bulb (VLH-100)
- 1 Y-fitting (SY44-6)
- Integral mounting bracket

#### KIT-TD150F

- 1 TD150 exhaust fan
- 2 Vent Lights with Fluorescent Bulb (VLF-100)
- 1 Y-fitting (SY44-6)
- Integral mounting bracket

**S&P  
Exclusive  
Product**

# MODEL TD-SILENT

EXTREMELY QUIET INLINE MIXED FLOW DUCT FAN

## MODEL FEATURES

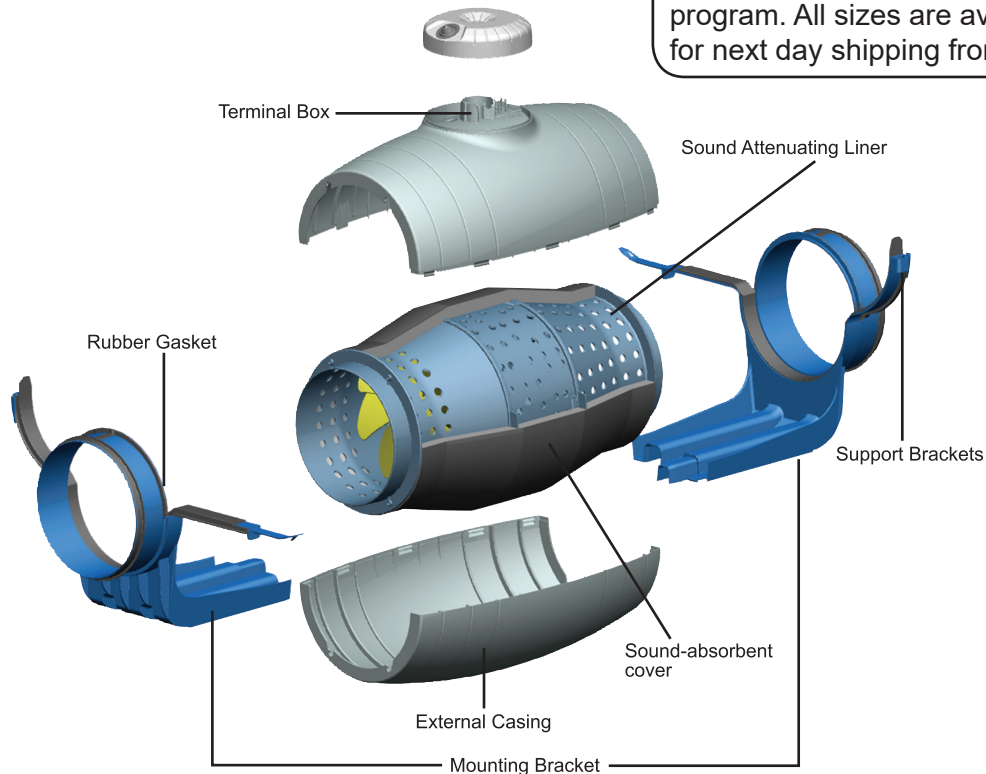
- Exhaust air up to 530 CFM with static pressure capabilities to 1" w.g.
- Mixed flow impeller for excellent air flow to pressure performance ratio
- Direct connection, single-speed motor
- Ideal for applications where space is limited
- cULus Listed

## MODEL OVERVIEW

The TD-SILENT fans as the name suggests, are extremely quiet, low profile "Mixed-flow" fans. Manufactured in plastic material with an external connection box, the body is easily dismantled with a single speed controllable 115V 60Hz motor. Sound waves are directed through the perforated inner skin and absorbed by a layer of sound-absorbent insulation. Plus the TD-SILENT is fitted with rubber gaskets on the inlet and outlet to facilitate installation, absorb vibrations, and provide a virtually air-tight seal.

The TD-SILENTs offer the same simple installation features as the extremely popular TD-MIXVENT fans with an integral mounting bracket, removable body, and a terminal box that can be rotated 360 degrees. The low profile of the fans makes them the ideal product for installations with low height limits, such as the case of suspended ceilings.

Model TD-SILENT is available in our Quickship program. All sizes are available for next day shipping from stock.



**5 year fan housing and motor warranty**

All specifications are subject to change without notice unless approved in submittal by Soler & Palau.



## CONSTRUCTION/SPECIFICATION CHECKLIST

### Construction

The TD-SILENT consists of three nominal sized in-line fans. All models are specifically designed for direct connection in-line with industry standard diameter round ducting.

The TD-SILENT models 125XS, 150S and 200S are manufactured in tough reinforced plastic. Sound waves are directed through the perforated inner skin and absorbed by a layer of sound-absorbent insulation. Plus the TD-SILENT is fitted with rubber gaskets on the inlet and outlet to absorb vibrations.

### Long Life

Permanently lubricated motors are engineered for trouble-free continuous operation for 40,000 hours.

### Impellers

The impeller blades are molded in tough ABS plastic.

### Motors

#### *Models 125XS:*

Single-phase, 120V 60Hz, shaded pole induction asynchronous motor in die cast aluminum. All motors include direct single speed connection and are also suitable for voltage speed control.

- Class I electrical insulation
- IP 44 Protection
- Class B Motor Insulation
- Safety auto reset Thermal Overload Protection (fuse type)
- Self-lubricating sleeve bearings.
- Suitable for working airstreams up to 104°F (40°C)

#### *Models 150S and 200S:*

Single-phase induction asynchronous motor, with permanent capacitor and external rotor in die cast aluminum. All models include direct single speed connection and are also suitable for voltage speed control.

- Class I electrical insulation
- IP 44 Protection
- Thermal Overload Protection
- Class B Motor Insulation
- Sealed For Life, ball bearings
- Size 200S: Suitable for working airstreams up to 104°F (40°C)
- Size 150S: Suitable for working airstreams up to 140°F (60°C)

### Code Approval

- All models have been independently safety tested by Underwriters Laboratories, Inc. and are UL and cUL Listed.
- Independently tested for Airflow Performance.
- The TD product range is certified by the Home Ventilating Institute (HVI) for Air Performance.
- All models are ENERGY STAR® qualified.

## ACCESSORIES



PG  
Premium Intake  
Grille



BOC/BOR  
Interior Air  
Valve



MCA  
Backdraft  
Shutter



MBR  
Connector



MAR  
Rectangular Duct  
Adapter



MRJ  
Grille

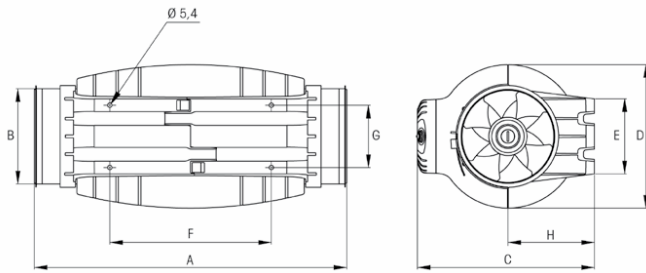


CVC  
Continuous  
Ventilation Controls



## PERFORMANCE/DIMENSIONS

### Dimensions (inches/mm)



Model	A	B Ø	C	D Ø	E	F	G	H
TD-125XS	22 <sup>5/8</sup>	3 <sup>13/16</sup>	9 <sup>15/16</sup>	8 <sup>1/16</sup>	3 <sup>15/16</sup>	9 <sup>13/16</sup>	3 <sup>1/4</sup>	4 <sup>3/4</sup>
TD-150S	19 <sup>1/16</sup>	5 <sup>13/16</sup>	10 <sup>13/16</sup>	8 <sup>11/16</sup>	4 <sup>9/16</sup>	9 <sup>13/16</sup>	3 <sup>3/4</sup>	5 <sup>1/4</sup>
TD-200S	22 <sup>3/8</sup>	7 <sup>13/16</sup>	12 <sup>7/8</sup>	10 <sup>3/8</sup>	5 <sup>11/16</sup>	13 <sup>11/16</sup>	5 <sup>1/16</sup>	6 <sup>7/16</sup>

### Performance characteristics

All models include a direct two speed motor connection.

Model	Duct Dia. Ins.	Nom. RPM	Volts	Max. Watts	Speed	CFM v Static Pressure (SP) Ins. WG							Max. SP	Max operating temp. (°F)	Wgt. (lbs)
						0"	0.125"	0.25"	0.375"	0.5"	0.75"	1.0"			
TD-125XS	5"	2500	120	36	HS	203	175	138	84	33	-	-	0.6	104	11.9
TD-150S	6"	2700	120	65	HS	333	315	286	271	257	178	77	1.2	140	13.2
TD-200S	8"	2200	120	122	HS	530	503	472	443	415	349	204	1.2	140	19.2



The TD-SILENT Models 125XS and 150S are California Title 24 compliant and meet ASHRAE 62.2 when installed with a CVC and other TD models are compliant when installed with a 3 way switch and remotely mounted speed control.

### Sound characteristics

Fan sound levels are measured in sones. At this time there are no sone level test standards available through HVI due to the fact that remote mounted fan noise levels are in proportion to the following: type of duct, length of duct, fan distance from the intake source and other miscellaneous factors. However, it is generally accepted that remote mounted venting is usually quieter than standard (in room) venting.

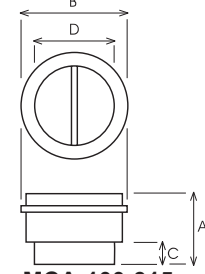


**MCA**

**Backdraft dampers** are installed at the fans' discharge. They prevent the entry of odors, air currents and prevent heat leaks when the exhauster is not in operation.

Model	Type TD
MCA-100	100
MCA-125	125
MCA-150	150
MCA-200	200
MCA-250	250
MCA-315	315

**Dimensions (inches/mm)**



**MCA-100-315**

Model	A	B	C	D
MCA-100	4 3/16 107	4 3/8 111	1 1/4 31	3 11/16 94
MCA-125	4 3/16 107	5 3/8 136	1 1/4 31	4 11/16 119
MCA-150	4 3/4 121	6 7/16 163	1 3/8 35	5 13/16 147
MCA-200	5 3/16 131	8 7/16 214	1 3/8 35	7 3/4 197
MCA-250	6 3/16 164	10 3/8 264	1 5/8 42	9 3/4 248
MCA-315	8 1/16 205	13 330	1 15/16 50	12 5/16 312



**MRJ**

**Grilles** fit on the suction and the discharge sides of the installation. They prevent the entry of foreign bodies which could damage the fan.

Model	Type TD
MRJ100	100
MRJ125	125
MRJ150	150
MRJ200	200
MRJ250	250
MRJ315	315



**MBR**

**Flanges** enable TD devices to connect in a series.

Model	Type TD
MBR-125	125
MBR-150	150
MBR-200	200
MBR-250	250

# MODEL PV

## INLINE CENTRIFUGAL DUCT FAN



### MODEL FEATURES

- Exhaust air up to 942 CFM with static pressure capabilities to 1.5" w.g.
- Galvanized steel casing with black baked enamel coating
- Pre-wired junction box
- Ideal for applications where space is limited
- Non-overloading backward inclined wheel for efficiency at higher static pressures
- AMCA Seal for Air Performance
- cULus Listed, Standard 507 & 705

### MODEL OVERVIEW

The POWERVENT (PV) series of direct drive centrifugal in-line duct ventilation fans consists of twelve model sizes 4", 5", 6", 8", 10" and 12.4" respectively. All models are designed for direct connection in-line with standard diameter round ducting. Airflow performance values range from 108 CFM (PV-100) up to 942 CFM (PV-315x).


All PV fan models incorporate a powerful external rotor motor that has been factory matched to a non-overloading backward curved centrifugal fan wheel.

This powerful combination enables the PV fans to deliver exceptional airflow performances against high static pressure typically found in ducted ventilation systems. All motors within PV fans are fully speed controllable using voltage or frequency control regulators.

The PV series of duct exhaust or supply fans have been specifically designed for simple installation and many years of maintenance free operation. The PV fans can be mounted at any angle and at any point along the duct. The totally enclosed motor design allows the PV fans to operate in high moisture, lint and dust laden air. All models are manufactured with high quality materials and workmanship that is supported by a comprehensive **five (5) year warranty**.

All PV Fans feature a corrosion resistant galvanized steel casing with black baked enamel coating and are supplied with a strong mounting bracket and prewired junction box.

The PV100X fans feature Class F motor insulation.



Model PV is available in our Quickship program. All sizes are available for next day shipping from stock.

**5 year fan housing and motor warranty**

## **CONSTRUCTION/SPECIFICATION CHECKLIST**

### **Casing**

- Manufactured from high grade pressed galvanized steel, with black baked enamel coating.
- Extra long inlet and discharge collars make installation quick and trouble free.
- Supplied with a strong galvanized steel mounting bracket.
- Supplied with a prewired junction box.

### **Wheel / Impeller**

- Backward curved centrifugal type.
- Factory matched to an external rotor motor and dynamically balanced to eliminate vibration.

### **Long Life**

- Permanently lubricated motors are engineered for trouble-free continuous operation for 40,000 hours.

### **Motor**

- Totally enclosed permanent split capacitor start and run external rotor motors.
- 120V 60Hz (single phase) electrical connection.
- Permanently sealed, self lubricating precision ball bearings.
- Safety Thermal Overload Protection Cut-Out (Automatic Reset Type).
- All Models are suitable for working airstreams up to 140°F. PV-100X works up to 158°F.

### **Code Approval**

- All models have been independently safety tested by Underwriters Laboratories, Inc. and are UL and cUL Listed.
- Independently safety tested by Intertek Laboratories, and are ETL Listed.
- Independently tested for Airflow Performance. The PV range is licensed to bear the AMCA seal for Air Performance.

## **ACCESSORIES**



BOC  
Interior  
Air Valve



CAR  
Backdraft  
Damper



ACOP-VENT  
Antivibrating  
coupling



SIL  
Sound  
Attenuator



PER  
Plastic louver  
shutter

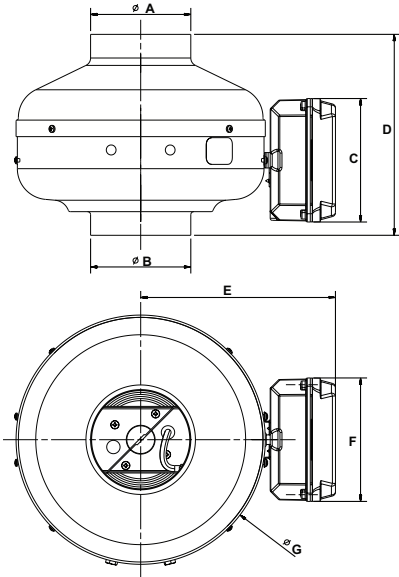


SC 15  
Variable speed  
control

*Please refer to the S&P Group A (Residential/Light Commercial) catalog for a complete line of accessories.*

# PERFORMANCE/DIMENSIONS

## Dimensions in inches/mm



Model	A	B	C	D	E	F	G	Weight lbs(kgs)
PV-100	3 <sup>13/16</sup> 97.5	3 <sup>13/16</sup> 97.5	4 <sup>3/4</sup> 120	7 <sup>11/16</sup> 196	7 <sup>1/2</sup> 190	4 <sup>3/4</sup> 120	9 <sup>9/16</sup> 243	7 3.0
PV-100x	3 <sup>13/16</sup> 97.5	3 <sup>13/16</sup> 97.5	4 <sup>3/4</sup> 120	7 <sup>11/16</sup> 196	7 <sup>1/2</sup> 190	4 <sup>3/4</sup> 120	9 <sup>9/16</sup> 243	7 3.0
PV-125	4 <sup>13/16</sup> 122.5	4 <sup>13/16</sup> 122.5	4 <sup>3/4</sup> 120	7 <sup>13/16</sup> 198	7 <sup>1/2</sup> 190	4 <sup>3/4</sup> 120	9 <sup>9/16</sup> 243	7 3.0
PV-125x	4 <sup>13/16</sup> 122.5	4 <sup>13/16</sup> 122.5	4 <sup>3/4</sup> 120	7 <sup>13/16</sup> 198	7 <sup>1/2</sup> 190	4 <sup>3/4</sup> 120	9 <sup>9/16</sup> 243	7 3.0
PV-150x	5 <sup>13/16</sup> 147	5 <sup>13/16</sup> 147	4 <sup>3/4</sup> 120	8 <sup>7/16</sup> 214	9 <sup>5/16</sup> 236	4 <sup>3/4</sup> 120	13 <sup>1/8</sup> 334	11 5.0
PV-200	7 <sup>13/16</sup> 198	7 <sup>13/16</sup> 198	4 <sup>3/4</sup> 120	8 <sup>3/4</sup> 223	9 <sup>5/16</sup> 236	4 <sup>3/4</sup> 120	13 <sup>1/8</sup> 334	11 5.0
PV-200x	7 <sup>13/16</sup> 198	7 <sup>13/16</sup> 198	4 <sup>3/4</sup> 120	8 <sup>3/4</sup> 223	9 <sup>5/16</sup> 236	4 <sup>3/4</sup> 120	13 <sup>1/8</sup> 334	11 5.0
PV-250	9 <sup>3/4</sup> 248	9 <sup>3/4</sup> 248	4 <sup>3/4</sup> 120	8 <sup>1/16</sup> 205	9 <sup>5/16</sup> 236	4 <sup>3/4</sup> 120	13 <sup>1/8</sup> 334	13 6.0
PV-250x	9 <sup>3/4</sup> 248	9 <sup>3/4</sup> 248	4 <sup>3/4</sup> 120	8 <sup>1/16</sup> 205	9 <sup>5/16</sup> 236	4 <sup>3/4</sup> 120	13 <sup>1/8</sup> 334	13 6.0
PV-315	12 <sup>5/16</sup> 312	12 <sup>5/16</sup> 312	4 <sup>3/4</sup> 120	9 <sup>3/16</sup> 233	10 <sup>9/16</sup> 269	4 <sup>3/4</sup> 120	15 <sup>13/16</sup> 401	21 10.0
PV-315x	12 <sup>5/16</sup> 312	12 <sup>5/16</sup> 312	4 <sup>3/4</sup> 120	9 <sup>3/16</sup> 233	10 <sup>9/16</sup> 269	4 <sup>3/4</sup> 120	15 <sup>13/16</sup> 401	21 10.0

## Air Performance

Model No.	Nom. RPM	Volts	Max. Watts	CFM v Static Pressure (SP) Ins. WG									Max. SP	Duct Dia. Ins.
				0"	0.125"	0.25"	0.375"	0.5"	0.75"	1.0"	1.25"	1.5"		
PV-100	1400	120	57	108	100	92	85	78	66	52	33	18	1.70	4"
PV-100x	2880	120	84	153	142	130	120	111	96	80	63	34	1.85	4"
PV-125	2350	120	58	128	104	85	74	63	47	32	15	-	1.43	5"
PV-125x	2745	120	85	206	190	170	153	135	110	88	62	33	1.77	5"
PV-150x	2750	120	135	390	367	340	312	285	233	193	153	110	2.05	6"
PV-200	3100	120	130	402	375	350	327	296	239	179	135	85	1.94	8"
PV-200x	2930	120	180	544	515	485	446	415	360	312	273	230	2.64	8"
PV-250	3000	120	170	568	533	502	471	440	370	312	263	221	2.61	10"
PV-250x	3045	120	214	618	595	570	540	510	450	390	340	297	2.80	10"
PV-315	2600	120	170	654	605	570	525	487	408	333	265	203	2.21	12.4"
PV-315x	2650	120	370	942	905	859	811	762	622	508	440	390	3.90	12.4"

Performance certified is for installation type D-Ducted inlet, Ducted outlet. Performance ratings do not include the effects of appurtenances (accessories). Speed (RPM or RPS) shown is nominal. Performance is based on actual speed of test.



S&P USA Ventilation Systems, LLC., Div. of Soler & Palau Ventilation Group, certifies that the PV range shown herein is licensed to bear the AMCA Seal. The ratings shown are based on tests and procedures performed in accordance with AMCA Publication 211 and comply with the requirements of the AMCA Certified Ratings Program.



The PV-POWERVENT Series fans are California Title 24 compliant and meet ASHRAE 62.2 when installed with 3 way switch and remotely mounted speed control.

## Sound

Fan sound levels are measured in sones. At this time there are no sone level test standards available through HVI due to the fact that remote mounted fan noise levels are in proportion to the following: type of duct, length of duct, fan distance from the intake source and other random factors. It is generally accepted that remote mounted venting is usually quieter than standard (in room) venting.

# KIT - PV BATHROOM EXHAUST KITS

FEATURING PV-POWERVENT FANS



S&P PV-POWERVENT Series fans are also available as easy-to-install kits. This ultra powerful bathroom fan offers a choice of single or dual vent exhaust. These kits are used for installations that require long or complicated duct runs.

All PV kits have standard 8-year warranty.



## PV Deluxe Exhaust Kits



## Standard Exhaust Kits



### KIT-PV100

- 1 PV100 exhaust fan
- 1 plastic round grille (PG-100)
- Mounting bracket

### KIT-PV100x

- 1 PV100x exhaust fan
- 1 plastic round grille (PG-100)
- Mounting bracket

### KIT-PV150X

- 1 PV150X exhaust fan
- 1 plastic round grille (PG-150)
- Mounting Bracket

### KIT-PV100x-DV

- 1 PV100x exhaust fan
- 2 plastic round grilles (PG-100)
- 1 Y-fitting (SY-4)
- Mounting Bracket

### KIT-PV150X-DV

- 1 PV150X exhaust fan
- 2 plastic round grilles (PG-150)
- 1 Y-fitting (SY-6)
- Mounting Bracket

### KIT-PV200-DV

- 1 PV200 exhaust fan
- 2 plastic round grilles (BOR-200)
- 1 Y-fitting (SY-8)
- Mounting Bracket

# MODEL SWF

## SIDEWALL CENTRIFUGAL FAN

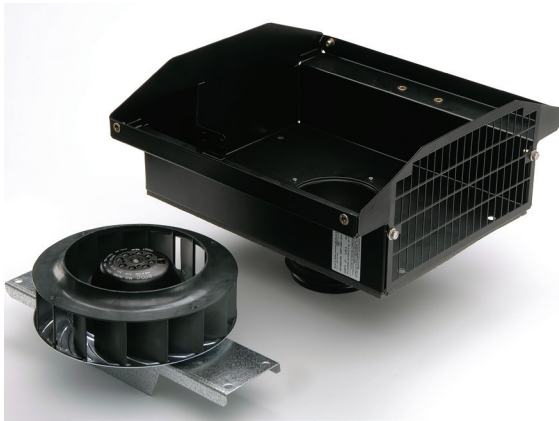


### MODEL FEATURES

- Exhaust air up to 416 CFM with static pressure capabilities to 1.5" w.g.
- Galvanized steel casing with black backed enamel coating
- Pre-wired junction box
- Ideal for applications where space is limited
- Non-overloading backward inclined wheel for efficiency at higher static pressures
- cULus Listed

### MODEL OVERVIEW

The SWF series utilizes the same powerful (high static) motor found in the popular PV Series fans, yet the SWF series is encased in an exterior mounted housing. The outdoor rated exterior housing provides easy access from the outside of a building or dwelling. This makes the SWF a great solution for installations where attic space or easy indoor access is difficult and not suitable for traditional PV style in-line mounting. The Sidewall Fan Series (SWF) of direct drive centrifugal ventilation fans consists of five model sizes ranging from 4-8". All models are designed for direct connection in-line with standard diameter round ducting. Airflow performance values range from 119 CFM up to 416 CFM.



All SWF series models incorporate a powerful external rotor motor that has been factory matched to a non-overloading backward curved centrifugal fan wheel.

This powerful combination enables the SWF to deliver exceptional airflow performances against high static pressure typically found in ducted ventilation systems. All motors within the SWF series are fully speed controllable using voltage or frequency control regulators.

The SWF series has been designed for easy through the wall installation. The totally enclosed motor design allows for the SWF to operate in high moisture, lint and dust laden

air. All models are manufactured with high quality materials and workmanship that is supported by a comprehensive **five (5) year warranty**.

The SWF series features a corrosion resistant galvanized steel casing with a baked enamel coating that can be painted to match the exterior wall. The unit also includes a built-in backdraft damper and an extended opening exhaust grille. The larger grille allows for the easy exhaust of "dirty" or lint laden air while the spring-loaded backdraft damper helps prevent insects, etc. from entering duct work.



Built-in Spring-loaded Backdraft Damper

Model SWF is available in our Quickship program. All sizes are available for next day shipping from stock.



### 5 year fan housing and motor warranty

All specifications are subject to change without notice unless approved in submittal by Soler & Palau.



## CONSTRUCTION/SPECIFICATION CHECKLIST

### Casing

- Manufactured from high grade pressed galvanized steel, with baked enamel coating.
- Removable top for easy access to motor for cleaning or inspection.
- Large grille opening for easy passing of lint and other potentially clogging materials.
- Supplied with a prewired junction box.

### Wheel / Impeller

- Backward curved centrifugal type.
- Factory matched to an external rotor motor and dynamically balanced to eliminate vibration.

### Motor

- Totally enclosed permanent split capacitor start and run external rotor motors.
- 115V 60Hz (single phase) electrical connection.
- Permanently sealed, self lubricating precision ball bearings.
- Safety Thermal Overload Protection Cut-Out (Automatic Reset Type).
- All Models are suitable for working airstreams up to 140° F

### Code Approval

- All models have been independently safety tested by Underwriters Laboratories, Inc. and are UL and cUL Listed.
- The SWF product range is certified by the Home Ventilating Institute (HVI) for Air Performance.

## ACCESSORIES



SC 15  
Variable speed  
control



BOC/BOR  
Interior Air Valve



SPT-100x  
Pressure Switch



CS-325  
Current Sensor

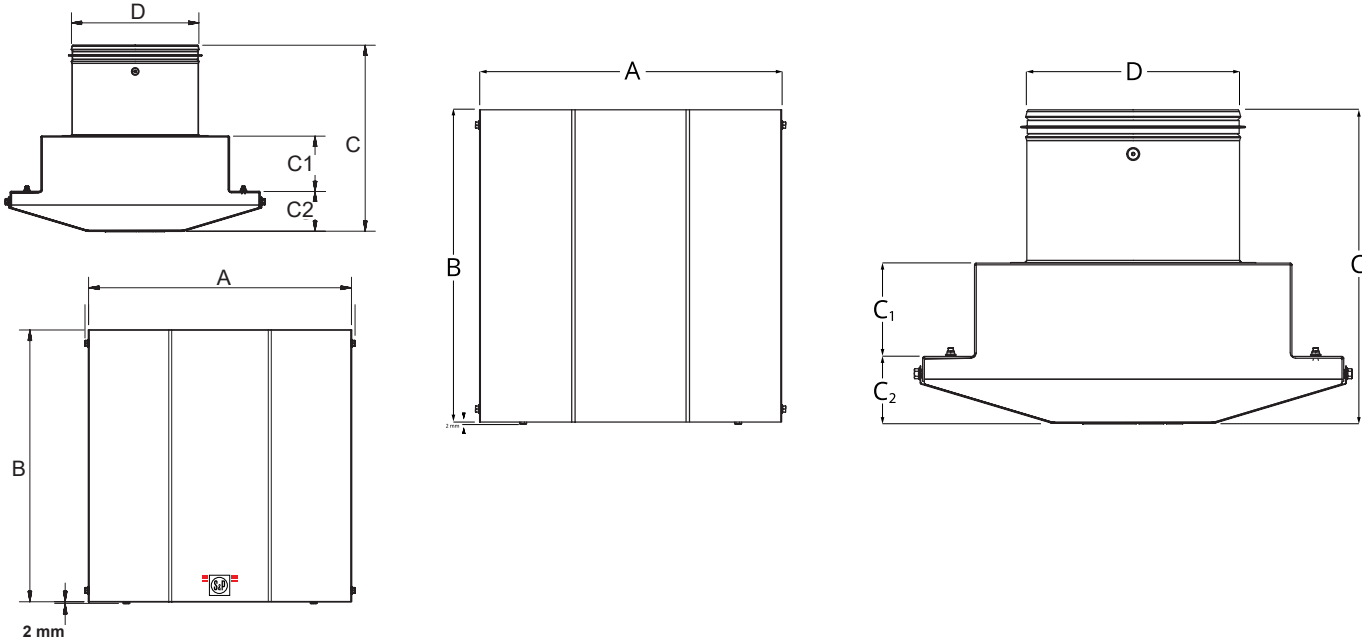


FB  
Filter Box

*Please refer to the S&P Group A (Residential/Light Commercial) catalog for a complete line of accessories.*

## PERFORMANCE/DIMENSIONS

### Dimensions in inches/mm



Model	A	A1	B	B1	C	C1	C2	D	X	X1	Y	Y1
SWF-100	13 1/4 337	9 11/16 245	13 1/4 337	12 7/8 327	9 228	3 75	2 7/16 62	4 100	6 150	4 100	11 3/5 295	5 1/2 140
SWF-100x	13 1/4 337	9 11/16 245	13 1/4 337	12 7/8 327	9 228	3 75	2 7/16 62	4 100	6 150	4 100	11 3/5 295	5 1/2 140
SWF-150	13 1/4 337	9 11/16 245	13 1/4 337	12 7/8 327	10 1/4 260	3 3/16 81	2 7/16 62	6 150	6 150	4 100	11 3/5 295	5 1/2 140
SWF-150x	15 9/16 395	11 9/16 294	16 1/16 408	15 11/16 398	10 254	3 75	2 7/16 62	6 150	8 199	5 125	14 2/5 366	7 176
SWF-200	15 9/16 395	11 9/16 294	16 1/16 408	15 11/16 398	11 7/16 291	3 7/16 87	2 7/16 62	8 200	8 199	5 125	14 2/5 366	7 176

## Air Performance

Model	RPM	Volts	Frequency	Current	Watts	CFM vs. Static Pressure (SP) Ins. WG								
						0"	0.125"	0.25"	0.375"	0.5"	0.75"	1.0"	1.25"	1.5"
SWF-100	2200	120	60 Hz	0.52 A	57	119	106	92	78	64	44	26	-	-
SWF-100X	2600	120	60 Hz	0.8 A	90	171	162	152	142	118	90	66	46	28
SWF-150	2600	120	60 Hz	0.8 A	90	235	221	197	181	168	122	81	60	27
SWF-150X	2800	120	60 Hz	1.0 A	115	354	332	310	287	266	230	192	147	96
SWF-200	2800	120	60 Hz	1.0 A	115	416	395	368	341	324	287	233	184	132



## Sound

Fan sound levels are measured in sones. At this time there are no sone level test standards available through HVI due to the fact that remote mounted fan noise levels are in proportion to the following: type of duct, length of duct, fan distance from the intake source and other random factors. It is generally accepted that remote mounted venting is quieter than standard (in room) venting.



## BATHROOM EXHAUST GRILLES FOR INLINE FANS

### Featuring Vent Lights and Premium Grilles

S&P's Grille Options give you the choice of seven (7) aesthetically pleasing grilles designed to match any bathroom decor. You can choose from our Vent Lights, Premium Grilles or Adjustable Grilles to fit your needs.

These grilles are designed to be used exclusively with one of S&P's remotely mounted inline fans (TD, PV, SWF) for virtually silent bathroom ventilation. Inline fans give you the option to mount your grille over the shower, toilet, tub, or in multiple locations (dual vent).

With S&P's Grille Options the choice is yours!

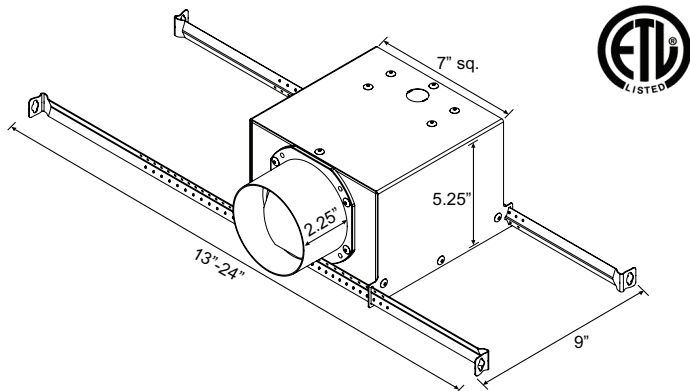
### Vent Lights Available with LED Bulbs



S&P's new Vent Lights give you ventilation that is "Out-of-Sight and Out-of-Mind"! The Vent Lights appear to be a regular can light, and when combined with a remotely mounted fan, the noise and unsightly look of the traditional bathroom fan are gone! The Vent Lights are aesthetically pleasing grilles with lights that will match any bathroom decor.

Model	Description
VLED-100	Vent Light with PAR30 LED Bulb
VLH-100	Vent Light with PAR30 Halogen Bulb
VLF-100	Vent Light with Energy Star Rated Compact Fluorescent Bulb

### Dimensions (inches)



### Features:

- Longer duct collar for 4" duct
- Extendable hanger bars up to 24"
- 7.5" grille
- Built-in backdraft damper
- 3 bulb options

### Why Choose the Vent Light with LED Bulbs?

S&P's respect for the environment extends to its Vent Lights with the optional LED Bulb. The benefits to the LED Bulbs include:

- Built to last a minimum of 60,000 hours, plus the LED's use a fraction of the energy that a traditional incandescent or halogen lamp uses
- LED's contain no mercury so they are easy to dispose of, unlike other energy efficient bulbs
- The LED lamps run cool and are shock resistant, making them safer for use in your home



## Premium Grilles

### PG



S&P's premium grilles come standard with steel collars for easy mounting and installation.

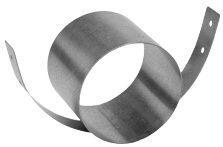
Model	Description
PG-100	4" Plastic Grille with 4" Steel Collar
PG-150	6" Plastic Grille with 6" Steel Collar

### Grille Dimensions (in inches)



Grille	Dia.	Height	Fits Duct Dia.	Fits Collars
PG-150G	8 1/8	1 5/8	6"	PG-150D
PG-100G	4 5/8	1 1/2	4"	PG-100D

### Collar Dimensions (in inches)



Collar	Diameter	Length
PG-100D	3 3/4	3 1/4
PG-150D	5 3/4	4 5/8

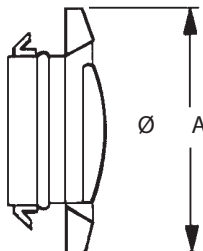
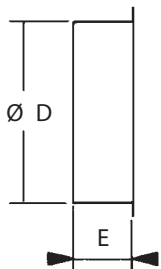
PG Collar

## Adjustable Grilles

### BOR/BOC



Exhaust grilles for bathrooms, toilets and other small rooms. All models offer an adjustable central valve to regulate the airflow.



Model	A	D	E	Weight (lbs)
BOR/BOC-100	145	100	50	1
BOR/BOC-125	145	125	50	1
BOR/BOC-150	204	160	50	1
BOR/BOC-200	244	200	50	1



**ADDITIONAL GENERAL ASSEMBLY ACCESSORIES**



**BOR/BOC**  
Round plastic/metal  
adjustable grille



**PG**  
Round grille without built-in  
backdraft damper



**MBR**  
Connection Flanges



**PER-W**  
Plastic louver shutter



**PER**  
High pressure aluminum  
louver shutter



**GRA**  
Aluminum exterior  
fixed grilles



**FB**  
Filtering Box



**SR**  
Reducer



**SY**  
Y sheet metal adapter

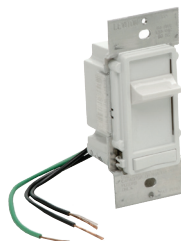


**SIL**  
Acoustic attenuators

**Electrical accessories**



**EPBT**  
Electronic push button timer



**SCS**  
Speed control slide type



**SC**  
Speed control



# KIT - CLOTHES DRYER BOOSTING KITS

FEATURING PV-100x FANS

If you have a dryer with long or complicated duct runs, S&P offers the perfect solution to increase dryer efficiency: the PV100x Dryer Booster Fan. The PV100x has been specifically designed to handle dryer boosting applications when overcoming long or complicated duct runs. This system helps save on drying time, moisture build-up, wear and tear on your dryer, and helps save on your electric bill. The centrifugal blade design is able to overcome extreme resistance from the most challenging installations. The PV-100x offers a fully enclosed motor, which ensures a long, trouble free life; thus making it the right choice for enhancing the performance of your clothes dryer.

The PV-100x fan is available separately or as part of a kit that includes everything necessary for a hands-free operation. Once the system is installed you will no longer waste time, energy or unnecessary wear and tear on your dryer. The next step is to select which activation best fits your needs.

## How to activate the PV-100x fan for clothes dryer boosting



### NOTE

The PV-100x Dryer Booster fan is suitable for use with duct runs of up to 105 linear feet of 4" rigid duct or a maximum of 6 elbows and 80 feet.



PV-100xps

### Pressure Switches

Pressure switches are a viable method of fan activation and a good solution for many installations. The pressure switch senses the pressure differential in the duct created by the dryer operation, thus activating the fan. Conversely, when the dryer is deactivated, the pressure switch senses this differential and the fan is deactivated. S&P's PV-100xps utilizes a compact pressure sensor and run timer enclosed within the junction box and mounted to the fan housing. The pressure sensor is also available as an accessory.



DBF-100xc

### Current Sensors

Current sensors are S&P's "preferred" method of activation. They are "fail-safe", as there is no maintenance required on the current sensor and they're easy to install. The current sensing device can be installed at the outlet (where the dryer plugs into the wall) or at the circuit breaker box. When the device senses current going to the dryer, it activates the fan and vice-versa. No thought! No maintenance! Our choice!



IL-115/230

### Interlocks

Interlocks, like Current Sensors, are another "fail-safe" method of clothes dryer booster activation. The interlocks senses when the fan is running and activates the dryer. Used as a safety feature, if the fan is not running or if there is a problem with the fan the dryer will not turn on.

All 3 activation methods are available as accessories or in the S&P's all inclusive dryer booster kits.



## SWF - Sidewall Mount Exhaust Fan for Dryer Boosting



The sidewall unit can be paired with a current sensor or pressure switch when interior duct access in a home, apartment or townhouse is limited or difficult. The expanded exhaust grille allows for the easy passing of lint laden air. The SWF utilizes the same powerful motor as the PV-100x and is also suitable for duct runs up to 105 feet or up to 80 feet with 6 elbows. The low profile SWF fan is easy to install with an epoxy coating that can be painted to match the exterior of the building. The SWF also offers the same trusted 5 year warranty.





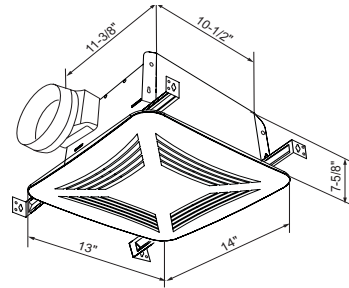
# MODEL PC

## CEILING MOUNT BATHROOM FAN



### Features & Construction

- Extremely quiet operation 0.5 to 1.1 Sones
- 50-150 CFM
- Motors operate with the lowest heat build up for long life even when run continuously - 5 year warranty
- PC50X features 4" duct connectors
- PC80X & 110X feature both 4 and 6" duct connectors
- PC150 features 6" duct connectors
- Built-in backdraft damper
- Robust steel housing
- Internal electrical wiring box
- Attractive, sturdy grille
- Thermally protected motor
- ETL Listed
- HVI Certified
- AMCA Air and Sound Certified
- PC50X, PC80X, 110X & 150 are ENERGY STAR® qualified



### HVI Certified Performance

Model	Duct Size	CFM	Static Pressure (in W.G.)	Energy Efficiency (CFM/Watts)*	Watts	Power (V/Hz)	Sones *	Amps
PC50X	4"	50/38	0.1/0.25	3.5	16.1	120/60	0.9	.17
PC80X	4"	80/61	0.1/0.25	3.5	24.3	120/60	1	.27
	6"	90/64		3.7	24.4		0.5	
PC110X	4"	110/91	0.1/0.25	4.3	27.3	120/60	0.9	.30
	6"	130/109		4.7	27.6			
PC150	6"	150/131	0.1/0.25	3.6	43.2	120/60	1.1	.34



\* Energy Star qualified data based on tested air flow and power consumption.

### AMCA Certified Performance

Model	Duct Size	Static Pressure	CFM	Sones *	RPM
PC80X	4"	0	102	1.3	800
	4"	0.1	86	1.6	800
	4"	0.25	59	2.4	800
	6"	0	119	1.0	800
	6"	0.1	89	1.3	800
	6"	0.25	66	2.4	800
PC110X	4"	0	114	1.5	850
	4"	0.1	100	1.7	850
	4"	0.25	76	2.3	850
	6"	0	134	1.4	850
	6"	0.1	112	1.5	850
	6"	0.25	86	2.0	850
PC150	6"	0	159	2.3	1000
	6"	0.1	140	2.2	1000
	6"	0.25	117	2.5	1000

### Dimensions

Model	Duct Dia.	Grille Size (Sq. in)	Cabinet Size (in Inches)			Unit Wgt. (lbs)	ENERGY STAR
			W	D	H		
PC50X	4"	10-1/4 x 10-1/2	9	9	5-3/4	7	No
PC80X	4 & 6"	13 x 14	11-3/8	10-1/2	7-5/8	11	Yes
PC110X	4 & 6"	13 x 14	11-3/8	10-1/2	7-5/8	11	Yes
PC150	6"	13 x 14	11-3/8	10-1/2	7-5/8	11	Yes

The performance ratings include the effects of inlet grille and backdraft damper in the airstream. Speed (RPM) shown is nominal. Performance is based on actual speed of test. The sound ratings are loudness values in fan sones at 5' (1.5m) in a hemispherical free field calculated per AMCA Std. 301. Values shown are for Installation Type B: Free inlet fan sone levels. Air performance shown is for Installation Type B: Free inlet, Ducted outlet.

\*The difference between some values certified by HVI for residential use and by AMCA for commercial/industrial use is mainly due to the ANSI S3.4 procedures used to convert measured sound to perceived sound, and because HVI and AMCA have different rules for rounding some values. ANSI S3.4 specifies a procedure for calculating loudness as perceived by a typical listener under specific conditions. HVI establishes values in a spherical free field at a distance of 5 feet from the fan. AMCA establishes values in a hemispherical free field at a distance of 5 feet from the fan. It is not possible to achieve an exact comparison of HVI and AMCA sone values.



S&P USA Ventilation Systems, LLC., Div. of Soler & Palau Ventilation Group, certifies that the Models PC shown herein are licensed to bear the AMCA Seal. The ratings shown are based on test and procedures performed in accordance with AMCA Publication 211 and AMCA Publication 311 and comply with the requirement of the AMCA Certified Ratings Program.

## PC Options Overview

The simplicity of S&P's Premium CHOICE Series comes in the options. While other premium bath fans come as lighted fans, speed control, motion sensor or humidity sensor built in, our Premium Choice bath fans give you the flexibility to choose your grille and control separately. Our fans even allow you to change your mind after you install them!

Use the chart below to determine the options available with each Premium Choice Fan:

Option	Premium Choice Fan			
	PC50	PC80X	PC110X	PC150
	<b>With Standard Grille</b>			
Intermittent High Speed	✓	✓	✓	✓
Continuous 62.2 Speed Only	✓	✓	✓	✓
Continuous 62.2 Speed, Intermittent High Speed	✓	✓	✓	✓
Intermittent Reduced Speed	✓	✓	✓	✓
Humidity Sensing Only	✓	✓	✓	✓
Humidity Sensing and Intermittent High Speed	✓	✓	✓	✓
Contractor Pack		✓	✓	
	<b>With Optional Lighted (CFL or LED) Grille Kit</b>			
Intermittent High Speed		✓	✓	✓
Continuous 62.2 Speed Only		✓	✓	✓
Continuous 62.2 Speed, Intermittent High Speed		✓	✓	✓
Intermittent Reduced Speed		✓	✓	✓
Humidity Sensing Only		✓	✓	✓
Humidity Sensing and Intermittent High Speed		✓	✓	✓

## PCLK - Premium CHOICE Series Light Kits

### Grille Light Kits

S&P offers Premium Choice Series Light Kits with CFL bulbs or LED lights so you can choose a fan with lights now or later. These kits fit the PC80X, 110X, 150 and PCD110H. The CFL lighted grilles (PCLK) come standard with a 13 watt GU24 fluorescent bulb and a 4 watt night light. The LED lighted grilles (PCLEDK) come standard with an 11 Watt LED light and a 2 Watt LED night light setting.



## PCMK - Premium CHOICE Series Motion Kits

### Motion Sensing Grille Kits

S&P offers Premium Choice Series Motion Sensing Kits so you can have worry free bathroom ventilation. This kit fits the PC80X, 110X & 150. The motion sensing grille includes a motion sensor, a speed control and a LED night light.

**Note:** For PC50X lighted grille and radiation damper kit options, see Pg. 32.

## PCLMK - Premium CHOICE Series Motion Kits

### Motion Sensing Lighted Grille Kits

S&P offers a Premium Choice Series Motion Sensing Lighted Grille Kit. The PCLMK comes standard with a motion sensor, a 13 watt GU24 fluorescent bulb and a 4 watt night light. This kit fits the PC80X, 110X & 150.



## PC CONTROLS

### Humidity Sensor (PCHS)

Using a PC fan with S&P's humidity sensing control is a worry free solution to fighting excess humidity and possible mold problems. The sensor easily mounts inside the fan housing utilizing 2 pre-drilled holes and a standard receptacle. With the sensor at ceiling level it detects rapid increases in moisture where steam and humidity naturally rise, and automatically turns on the fan. The humidity sensor features an automatic shut off to save worry and money. The humidity sensor is the perfect solution to "fit & forget" the bath fan, especially in high traffic bathrooms, kids' bathrooms, or households on-the-go that must leave the house without properly venting humidity. S&P's PC fan with optional Humidity Sensor helps prevent cosmetic and possible mold issues associated with excess moisture.

- Detects rapid rise in humidity
- Simple plug into receptacle in fan housing
- Auto-shut off timer
- Accessible sensitivity adjustment
- Humidity is sensed at the ceiling
- Can be installed with new fan or as an add-on later if needed



### Speed Control (PCSC)

Using a PC fan with S&P's speed control is simple solution to for intermittent and continuous ventilation. The sensor easily mounts inside the fan housing utilizing 2 pre-drilled holes and a standard receptacle.

- Simple plug into receptacle in fan housing
- Accessible speed adjustment
- Can be installed with new fan or as an add-on later if needed
- Allows for adjustable continuous speed for ASHRAE 62.2
- High speed override



### Indoor Air Quality Control (PCIAQS)

S&P's exclusive IAQ sensor detects both Volatile Organic Compounds (VOCs) and humidity when installed with a PC fan. The PCIAQS is a Plug-&-Play module, so it can be installed in several different PC fans. The PCIAQS is compatible with the PC80X, PC110X, and PC150. It is also compatible with the Standard Grille, the Metal Grille (PCMG), and the Lighted Grille Kits (PCLK and PCLEDK).

- Easy Plug-&-Play design
- Detects VOCs and/or rapid rise in humidity
- Semiconductor gas sensor, detecting a wide range of VOCs
- Monitoring range is 400-2000 ppm equivalent CO<sub>2</sub>
- Senses humidity at ceiling level
- Field adjustable humidity sensitivity with 50-100% range. Factory setting is 75%
- Continuous speed control to run fan continuously
- Integrated control switch to turn features on and off
- Can be installed with new fan or as an add-on later
- Meets CALGreen Bathroom Fan Requirement



### Bluetooth Speaker Module (PCBTS)

Add the PCBTS to turn our popular PC fan into your personal audio system!

- High Quality Bluetooth® wireless speaker.
- Plug-&-Play with PC standard size AC motor fans
- Easy pairing with most Bluetooth® enabled devices
- After initial pairing, connection to device is automatic
- 30 foot Bluetooth® range
- 5-year warranty

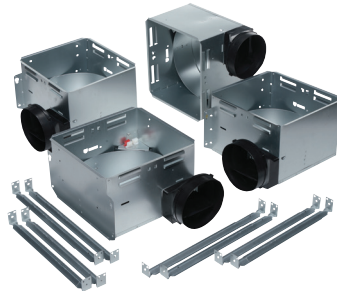




## PC CONTRACTOR PACKS

For simple installation, PC80X and PC110X are available as 4 packs with the fan housings ready for installation first, then after the drywall and painting are complete the motor and grilles are available to finish the job. The housing kit includes the housing and hanger bars, while the finish kit includes the motor plate, motor, wheel and grille.

Contractor packs can be ordered with the PCLK Lighted Kits to make a lighted fan pack or PCMK Motion Sensing Kits to make a motion sensing fan pack (order 4 grille packs with the Motor & Grille pack).



Housing Pack



Motor & Grille Pack

Pack Part #	Description
PCH	PC80X & PC110X Contractor Pack Housings (4 pk)
PC80F	PC80X Contractor Pack Motor and Grille (4 pack)
PC110F	PC110X Contractor Pack Motor and Grille (4 pk)

## ADDITIONAL PC ACCESSORIES

### 3-Switch Controls (PC3S)

The PC3S allows you to control three (3) features of a PC fan with one switch. Designed for PC fans with Grille Option and Plug & Play Control.



### Additional Accessory CHOICES

4" duct collar: PCDC4

6" duct collar: PCDC6

Metal Grille: PCMG

### Radiation Dampers

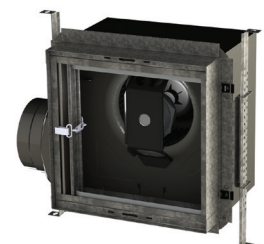
PCRD Includes:

- For use in 1, 2 and 3-hour rated floor-ceiling and roof-ceiling constructions
- ETL Listed (UL555C standard)
- Ceramic fiber with fiberglass cover
- Roll-formed frame 22 ga. galvanized steel

PCMKRD, PCLMKRD, PCLKRD, PCLEDKRD, PCMHKRD, PCLMHKRD

Kits Include same as PCRD plus:

- Grille Kit (as indicated)
- Wiring Extender





# MODELS PCD80XH PCD110X, PCD110XM, PCD110XH, PCD110XMH, & PCD110XIAQS

CEILING MOUNT BATHROOM FANS WITH DC MOTOR

## Features and Construction

- Extremely quiet operation <0.3 Sones
- Brushless DC Motor for long life - rated for 60,000 hours continuous on
- PCD110XM has a built-in motion sensor
- PCD80XH & PCD110XH has a built-in humidity sensor
- PCD110XMH has a built-in motion sensor and humidity sensor
- PCD110XIAQS detects VOCs and/or rapid rise in humidity
- High/Low speed delay timer
- Built-in backdraft damper
- Robust steel housing
- Attractive, sturdy grille
- cETLus Listed
- ENERGY STAR® qualified
- HVI Certified
- 6 year warranty



## Performance

PCD110X (All Variations, H, M, MH, IAQS)					
CFM @ 0.1" SP	40	90	110	120	140
CFM @ 0.25" SP	-	51	78	91	113
Sones @ 0.1" SP	<0.3	0.5	0.9	1.2	1.5
Watts @ 0.1" SP	4.2	8.1	10.3	12.2	15.6
Watts @ 0.25" SP	-	7.9	10.3	12.5	15.7
Energy Efficiency (CFM/Watt) 0.1" SP	9.6	12.2	11.4	10.8	9.4
Energy Efficiency (CFM/Watt) 0.1" SP	-	6.5	7.6	7.3	7.2
Amps	0.09	0.16	0.20	0.22	0.27
ENERGY STAR Qualified	Yes				
Duct Connector Diameter (in)	6"				
Grille Size (in)	13" x 14"				
Dimensions (w x d x h) (in)	11-3/8" x 10-1/2" x 7-5/8"				

PCD80XH			
CFM @ Static Pressure	0.1" SP	40	80
	0.25 SP	20	61
Sones @ 0.1" Static Pressure	0.1" SP	1.5	
	0.25 SP	0.7	
Energy Efficiency (CFM/Watt)	0.1" SP	15.6	
	0.25 SP	6.8	
Amps @ 0.1"SP	0.35		

## For PCD110X Models Only You CHOOSE Your Airflow!

The built-in **Toggle Switches** and duct connector options allow you to set the PCD110X fan to the required airflow:

1	2	3	1	2	3	1	2	3	1	2	3
90	110	120	140								
6"	6"	6"	6"								

## Integrated Controls



Factory setting is 110 CFM with 6" duct



# MODEL PCD200

## CEILING MOUNT BATHROOM FAN WITH DC MOTOR

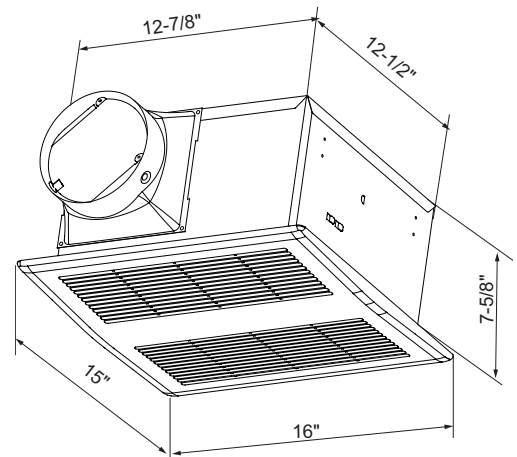
### Features and Construction

- Brushless DC Motor for long life - rated for 60,000 hours
- Built-in backdraft damper
- Robust steel housing
- Attractive, sturdy grille
- ETL Listed
- ENERGY STAR® qualified
- HVI Certified
- 6 year warranty



### Performance and Dimensions

PCD200	
CFM @ 0.1" SP	220
CFM @ 0.25 SP	189
Sones @ 0.1" SP	2.5
Sones @ 0.25" SP	N/A
Watts @ 0.1" SP	31.3W
Watts @ 0.25" SP	N/A
ENERGY STAR Qualified	Yes
Duct Connector Diameter (in)	6"
Grille Size (in)	15" x 16"
Dimensions (w x d x h) (in)	12-7/8" x 12-1/2" x 7-5/8"



S&P USA Ventilation Systems, LLC., Div. of Soler & Palau Ventilation Group, certifies that the Models PC shown herein are licensed to bear the AMCA Seal. The ratings shown are based on test and procedures performed in accordance with AMCA Publication 211 and AMCA Publication 311 and comply with the requirement of the AMCA Certified Ratings Program.

# MODEL PCLP

## LOW PROFILE CEILING MOUNT BATHROOM FANS

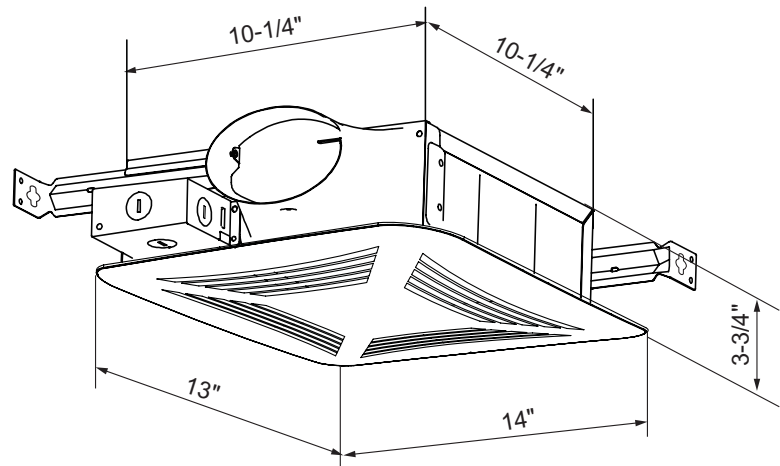
### Features & Construction

- Low profile housing design
- Suitable for wall and ceiling installations
- Quiet operation 1.2 to 2.0 Sones
- Totally enclosed condenser motor for long life
- Motor rated for 30,000 hours continuous on
- Built-in backdraft damper
- Robust steel housing
- Attractive, sturdy grille
- ETL Listed
- ENERGY STAR® qualified
- HVI Certified
- 5-year warranty



### Performance and Dimensions

	PCLP80	PCLP100
CFM @ 0.1/0.25" SP	80	100
Sones	1.2	2.0
Watts	25.9	24.6
Energy Efficiency (CFMs/Watts)	3.1	4.1
Amps	.35	.40
ENERGY STAR® Qualified	Yes	Yes
Duct Connector Diameter (in)	4" Oval	
Grille Size (in)	13" x 14"	
Dimensions (w x d x h) (in)	10-1/4" x 10-1/4" x 3-3/4"	
Bathroom Size (up to ft <sup>2</sup> )	75	95





## **PCLP - LOW PROFILE PREMIUM CHOICE SERIES LED LIGHT KITS**

### **LED Grille Lights**

S&P offers Premium Choice Series Light Kits with LED lights for the PCLP models so you can choose a fan with lights now or later. This kit (PCLPLEDK) fits the PCLP80 and 100. The LED lighted grilles come standard with an 11 Watt LED light and a 2 Watt LED night light setting.

## **PCLP - LOW PROFILE PREMIUM CHOICE SERIES CONTROLS**

### **Humidity Sensor (PCLPHS)**

Using a PCLP fan with S&P's humidity sensing control is a worry free solution to fighting excess humidity and possible mold problems. The sensor easily mounts inside the fan housing utilizing 1 pre-drilled hole and a standard receptacle. With the sensor at ceiling level it detects rapid increases in moisture where steam and humidity naturally rise, and automatically turns on the fan. The humidity sensor features an automatic shut off to save worry and money. The humidity sensor is the perfect solution to "fit & forget" the bath fan, especially in high traffic bathrooms, kids' bathrooms, or households on-the-go that must leave the house without properly venting humidity. S&P's PCLP fan with optional Humidity Sensor helps prevent cosmetic and possible mold issues associated with excess moisture.

- Detects rapid rise in humidity
- Simple plug into receptacle in fan housing
- Auto-shut off timer
- Accessible sensitivity adjustment
- Humidity is sensed at the ceiling
- Can be installed with new fan or as an add-on later if needed

### **Speed Control (PCLPSC)**

Using a PCLP fan with S&P's speed control is simple solution to for intermittent and continuous ventilation. The sensor easily mounts inside the fan housing utilizing 1 pre-drilled hole and a standard receptacle.

- Simple plug into receptacle in fan housing
- Accessible speed adjustment
- Can be installed with new fan or as an add-on later if needed
- Allows for adjustable continuous speed for ASHRAE 62.2
- High speed override

## **PCLP CONTRACTOR PACKS**

For simple installation, PCLP80 and PCLP100 are available as 4 packs with the fan housings ready for installation first, then after the drywall and painting are complete the motor and grilles are available to finish the job. The housing kit includes the housing and hanger bars, while the finish kit includes the motor plate, motor, wheel and grille.

<b>Pack Part #</b>	<b>Description</b>
PCLPH	PCLP Contractor Pack Housings (4 pk)
PCLP80F	PCLP80 Contractor Pack Motor and Grille (4 pack)
PCLP100F	PCLP100 Contractor Pack Motor and Grille (4 pack)



# MODEL PCRL

## Recessed Vent Light Models

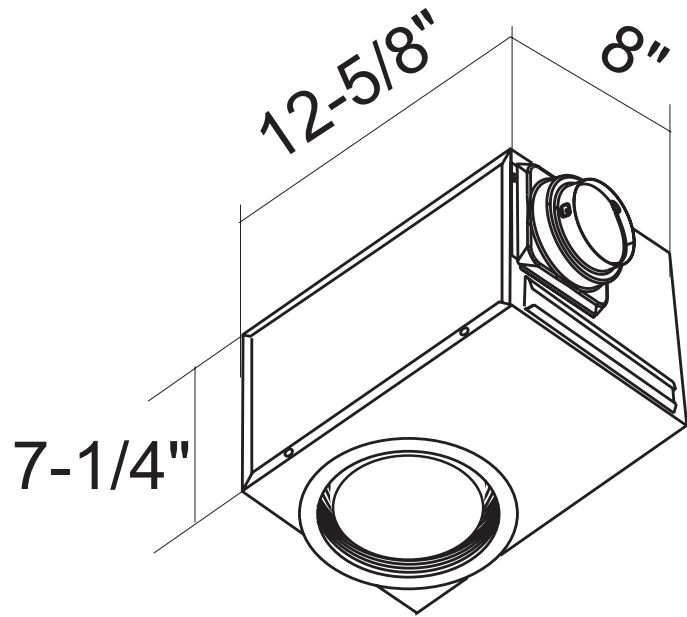
### Features & Construction

- Designed to look like a recessed can light
- Quiet operation 1.2 Sones
- PCRL80 has an E26 bulb base (bulb sold separately)
- PCRL80F has a GU24 bulb base (CFL spiral bulb included)
- Enclosed condenser motor for long life
- Motor rated for 30,000 hours continuous on
- Galvanized housing with black polyester powder coat finish
- Universal 4 or 5" metal duct adaptor with built-in backdraft damper
- 14-24" adjustable hanging bars
- Fits 2x8 construction
- cETLus Listed
- ENERGY STAR® qualified
- HVI Certified
- CALGreen (Title 24 Compliant)



### Performance and Dimensions

	PCRL80	PCRL80F
HVI Certified CFM 0.1" SP	80	
HVI Certified CFM 0.25" SP	50	
Sones @ 0.1" SP	1.5	
Voltage / Frequency	120V / 60Hz	
Energy Efficiency (CFM/Watts)	4.1	
Watts @ 0.1" SP	19.7	
Duct Connector Diameter (in)	4" and 6"	
Current	0.27A	
Dimensions (w x d x h) (in)	12-5/8" x 8" x 7-1/4"	
Avg. Ship Weight	10 lbs.	



### ADDITIONAL PCRL ACCESSORIES

#### Light Cover Options

##### PCRL80LC

Light Cover for use with PCRL80 when not using PAR30 style bulb.





# MODEL PCV

Value Series Models

## PCV50



## PCV80



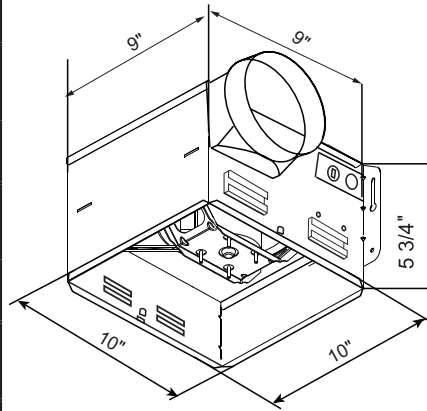
## Features & Construction

- Quiet operation 1.5 to 2.5 Sones
- 50 and 80 CFM models
- 4" duct connector with built-in backdraft damper
- Robust steel housing
- Attractive, sturdy grille
- Thermally protected motor
- cETLus Listed
- Model PCV80 is ENERGY STAR® qualified
- HVI Certified
- CALGreen (Title 24 Compliant)

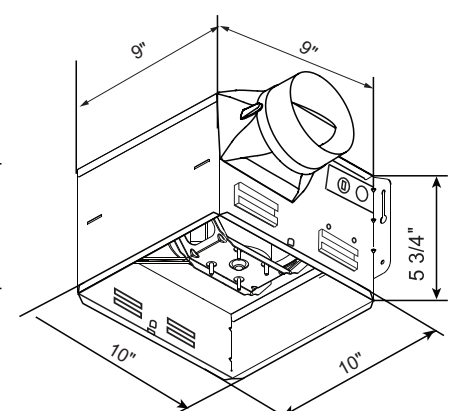
## Performance and Dimensions

	PCV50	PCV80
HVI Certified CFM 0.1" SP	50	80
HVI Certified CFM 0.25" SP	-	60
Sones @ 0.1" SP	2.5	1.5
Voltage / Frequency	120V / 60Hz	
Energy Efficiency (CFM/Watts)	-	3.3
Watts @ 0.1" SP	48.9	23.8
Duct Connector Diameter (in)	4"	
Current	0.8A	0.2A
Grille Dimensions (w x d) (in)	11-13/16" x 11-7/16"	
Fan Dimensions (w x d x h) (in)	9" x 9" x 5-3/4"	
Avg. Ship Weight	7 lbs.	

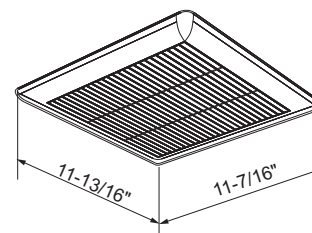
## PCV50



## PCV80



## Standard Grille



## **ADDITIONAL PCV ACCESSORIES**

### **Lighted Grille Kits**

#### **PCVLK**

CFL Lighted Grille Kit

- 13 watt GU24 Bulb
- 2700K/900 lumens
- Simple plug-in receptacle in fan housing
- Can be installed with new fan or as an add-on later



#### **PCVLEDK**

LED Lighted Grille Kit

- 13 watt LED light
- 4100K/1100 lumens
- Simple plug-in receptacle in fan housing
- Can be installed with new fan or as an add-on later

### **Radiation Dampers & Kits**

#### **PCVRD**

Ceiling Radiation Damper

- For use in 1, 2 and 3-hour rated floor-ceiling and roof-ceiling constructions
- ETL Listed (UL555C standard)
- Ceramic fiber with fiberglass cover
- Roll-formed frame 22 ga. galvanized steel

#### **PCVLEDKRD**

Ceiling Radiation Damper Kit with PCVLEDK

LED Kit Features:

- 13 watt LED light
- 4100K/1100 lumens
- Simple plug-in receptacle in fan housing
- Can be installed with new fan or as an add-on later

Radiation Damper Specifications:

- For use in 1, 2 and 3-hour rated floor-ceiling and roof-ceiling constructions
- ETL Listed (UL555C standard)
- Ceramic fiber with fiberglass cover
- Roll-formed frame 22 ga. galvanized steel

### **Notes:**

- *Grilles and radiation damper kits noted above are compatible with models PC50X, PCV50, and PCV80.*
- *Humidity Sensor, Plug-&-Play module (compatible with PCV50 & PCV80)*
- *Speed Control Plug-&-Play module (compatible with PCV80)*

# MODELS AF, FF & FFC

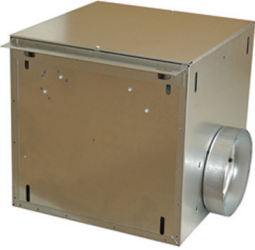
## CEILING AND INLINE/CABINET VENTILATORS



**Model FF**

### MODEL AF, FF FEATURES

- Exhaust air up to 1500 CFM
- Forward curve centrifugal wheel for high static pressure capabilities to 1" w.g.
- Resilient mount, low RPM motor for quiet operation (except FF50 and AF80)
- Speed controllable
- AMCA Seal for Air Performance
- cULus Listed (except FF50 & AF80 which are UL only)



**Model FFC**


### MODEL FFC FEATURES

- Exhaust air up to 3600 CFM
- Forward curve centrifugal wheel for high static pressure capabilities to 1" w.g.
- Resilient mount, low RPM motor for quiet operation
- Speed controllable
- AMCA Seal for Air Performance
- cULus Listed

## MODEL OVERVIEW

The extremely quiet FF and FFC ventilators are available from 50 to 3600 CFM, with static pressure capabilities to 1". All units have centrifugal blower wheels and low RPM motors on resilient mounts (except FF50 and AF80).

The forward curved centrifugal wheel with its high static pressure capability makes these ventilators suitable for either ducted or nonducted applications. They include removable blower assemblies and plug-in permanently lubricated motors for ease of servicing and cleaning.



Models FF and FFC are available in our Quickship program. All sizes are available for next day shipping from stock.

**1 year fan housing warranty, 1 year motor warranty**



## **CONSTRUCTION/SPECIFICATION CHECKLIST**

### **Grille**

- Conceals interior.
- Low profile styling, blends with any decor.
- White polymeric (FF50 - FF300).
- Metal finished with white enamel finish (FF400-FF1500).

### **Blower**

- Low RPM for quiet operation, speed controllable.
- Resilient anti-vibration mounts (FF50 & AF80 rigid mount).
- Balanced, polymeric, centrifugal blower wheel for quiet, efficient performance. (Metal wheel on FFC2000 & FFC3500).
- Permanently lubricated, thermally protected motor.
- Plug-in motor.
- Designed for continuous operation.

### **Housing**

- Rugged, 20 gauge galvanized steel.
- Duct connector.
- 1/2" acoustic insulation inside (except FF50, AF80 & FFC's).
- Integral automatic backdraft damper.
- Easy inline conversion available (FF100-FF1500).
- May be installed in ceiling or wall.
- Mounting brackets for easy installation and adaptability to numerous mounting requirements.
- Factory-shipped in horizontal discharge position, easily converted to vertical discharge.
- FFC inline units have a removable panel which allows for easy motor access without disturbing ductwork.

### **AMCA Seal**

- AMCA Air and Sound Licensed

### **UL Label**

- cULus listed (except FF50 & AF80 which are UL only).



## **OPTIONS/ACCESSORIES**

### **Roof Cap and Wall Cap**

- Weather resistant duct termination.

### **Inline Adapter Kit**

- Converts FF units into inline units.
- Available for FF100 through FF1500

### **Radiation Damper**

- UL rated for use in 1, 2, or 3 hour rated floor-ceiling, roof-ceiling design.
- Mounts directly to the fan, screws provided.
- Galvanized steel frame.
- High temperature, non-asbestos, reinforced fiber thermal fabric.
- 212°F fusible link.
- Stainless steel negator-type closure spring.
- Available for FF100 through FF1500.

### **Metal Grille Kit**

- White enamel painted steel.
- Mounting screws included.

### **Duct Transition**

- Allows for quick transition to round ducting.
- Galvanized steel construction.

### **Vibration Dampening Hangers**

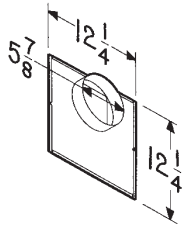
- Rubber in shear.
- Heavy-gauge steel construction with neoprene vibration dampening cushion.
- For use with 3/8" threaded rod (by others).

### **Damper Kit (for FFC 2000 and FFC 3500)**

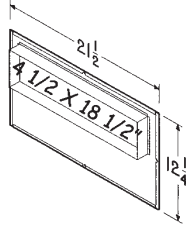
- Twin damper flaps and mounting hardware.
- Foam cushion and magnetic catch assure quiet backdraft prevention.



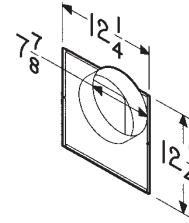
**OPTIONS/ACCESSORIES (cont.)**



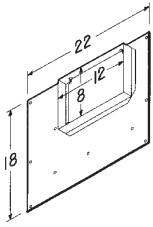
**961L In-Line Adaptor Kit**  
 • Galvanized steel  
 • Fits FF100 & FF150  
 • For 6" round duct intake



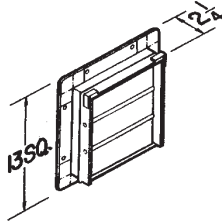
**982L In-Line Adaptor Kit**  
 • Galvanized steel  
 • Fits FF400, FF500 & FF700  
 • 4 1/2 x 18 1/2" duct intake



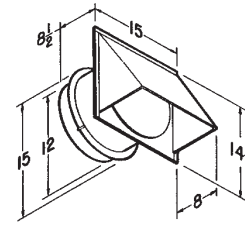
**981L In-Line Adaptor Kit**  
 • Galvanized steel  
 • Fits FF200, FF250 & FF300  
 • For 8" round duct intake



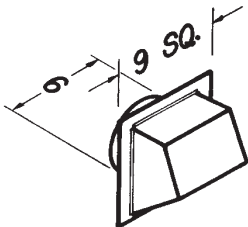
**983 In-Line Adaptor Kit**  
 • Galvanized steel  
 • Fits FF900 & FF1500  
 • 8" x 12" round duct intake



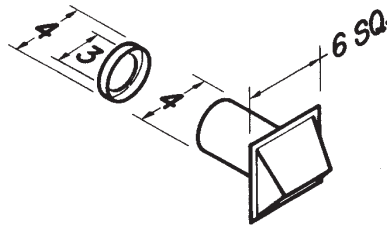
**Model 441 Wall Cap**  
 • Gravity dampers  
 • Collar with birdscreen for attaching 10" round duct  
 • Steel construction with aluminum louvers



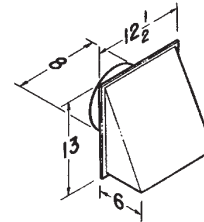
**Model 613 Wall Cap**  
 • High Capacity  
 • Built-in backdraft damper & birdscreen  
 • Aluminum natural finish  
 • For 12" round duct



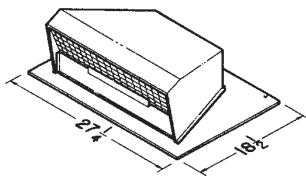
**Model 641 Wall Cap**  
 • Aluminum natural finish  
 • Built-in backdraft damper & birdscreen  
 • For 6" round duct



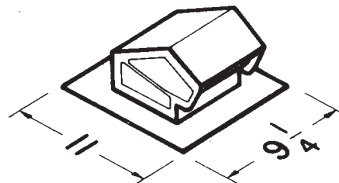
**Model 642 Wall Cap**  
 • Aluminum natural finish  
 • Built-in backdraft damper  
 • For 3" or 4" round duct  
 (4" to 3" transition included)



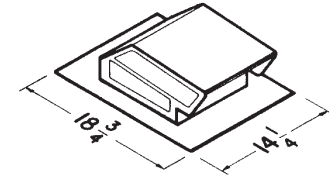
**Model 643 Wall Cap**  
 • Aluminum natural finish  
 • Built-in backdraft damper  
 • For 8" round duct



**Model 437 Roof Cap**  
 • High capacity design - up to 1200 CFM  
 • Built-in spring-loaded backdraft damper & birdscreen  
 • Steel, black electrically - bonded epoxy finish



**Model 636 Roof Cap**  
 • Black electrically - bonded epoxy finish  
 • Built-in backdraft damper & birdscreen  
 • For 3" or 4" round duct



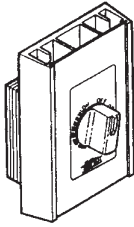
**Model 634 Roof Cap**  
 • Black electrically - bonded epoxy finish  
 • Built-in backdraft damper & birdscreen  
 • For 3 1/4" x 10" or up to 8" round duct

**Model 636AL - Aluminum**

**Model 644 - Aluminum**

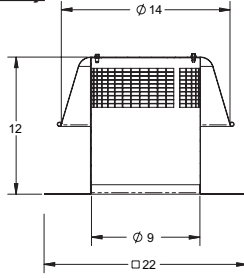


**OPTIONS/ACCESSORIES (cont.)**



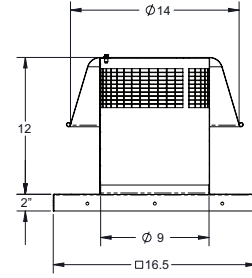
**Speed Control**

- Adjust speed from 100 to 50%
- 5 amp & 10 amp - 120V
- 6 amp - 240V
- 6 amp - 277V



**Model RCXIISF08 Flat Roof Cap**

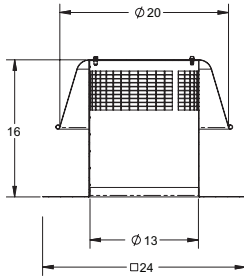
- For flat roof installation
- Spun Aluminum - natural finish
- Built-in birdscreen
- For up to 8" round duct



**Model RCXII08**

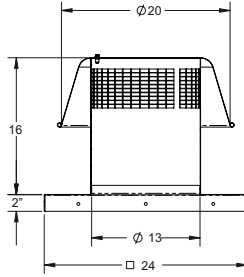
**Curb Mount Roof Cap**

- For curb mount installation
- Use 14-3/4" x 14-3/4" x 8" high curb
- Spun Aluminum - natural finish
- Built-in birdscreen
- For up to 8" round duct



**Model RCXIISF12 Flat Roof Cap**

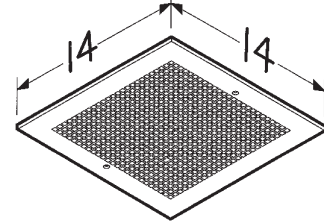
- For flat roof installation
- Spun Aluminum - natural finish
- Built-in birdscreen
- For up to 12" round duct



**Model RCXII12**

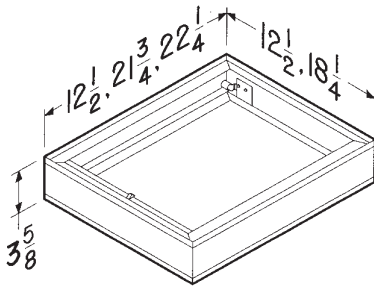
**Curb Mount Roof Cap**

- For curb mount installation
- Use 22-1/4" x 22-1/4" x 8" high curb.
- Spun Aluminum - natural finish
- Built-in birdscreen
- For up to 12" round duct



**Model MG 1 Metal Grille Kit**

- White enamel painted steel
- Mounting screws included
- Fits FF100, FF150, FF200, FF250 & FF300

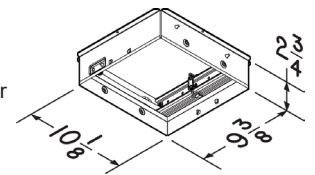


**Models RD1, RD2 & RD3 Radiation Dampers**

- UL rated for use in 1, 2 or 3 hour rated floor-ceiling, roof-ceiling design
- Galvanized steel frame
- High temperature, non-asbestos, reinforced fiber thermal fabric
- 212°F fusible link
- Stainless steel negator-type closure spring
- RD1 (12 1/4" x 12 1/4") fits FF100 - FF300
- RD2 (21 1/2" x 18") fits FF400 - FF700
- RD3 (22" x 18") fits FF900 - FF1500

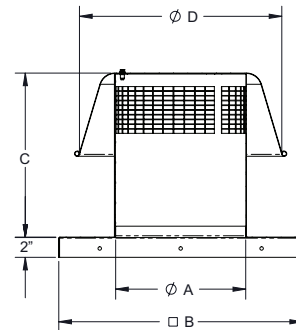
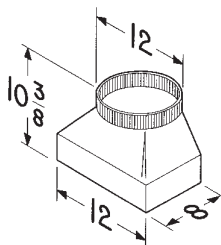
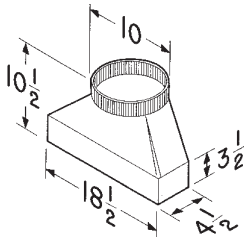
**Model RD80AF Radiation Damper**

- UL rated for use in 1, 2 or 3 hour rated floor-ceiling, roof-ceiling design
- Galvanized steel frame
- High temperature, non-asbestos, reinforced fiber thermal fabric
- 165°F fusible link
- Stainless steel closure springs
- RD80AF fits AF80



**Models 423 & T81212 Duct Transitions**

- Galvanized steel
- Allows for quick transition to easy-to-obtain-and-install round ducting
- 423 (4 1/2" x 18" to 10" round) for use with FF400 thru FF700
- T81212 (8" x 12" to 12" round) for use with FF900 and FF1500



**Model RCXII - 18" and 20" units**

Size	A	B	C	D
18	19	29.5	22	27
20	21	29.5	22	30



## OPTIONAL ACCESSORY COMPATIBILITY CHART

VARIABLE SPEED CONTROLS	CEILING MOUNT MODEL FF							IN-LINE/CABINET MODEL FFC						
	FF50 AF80	FF100 FF150	FF200 FF250 FF300	FF400 FF500	FF700	FF900	FF1500	FFC100 FFC150	FFC200 FFC250 FFC300	FFC400 FFC500 FFC700	FFC900	FFC1500	FFC2000	FFC3500
2727.1 (5 AMP 120V)	X	X	X	X			X	X						
2828.1 (10AMP 120V)		X	X	X	X	X	X	X	X	X	X	X	X	
80L in-unit speed control (3 amp 120 Volt) Ships separately for field mounting		X	X	X	X	X		X	X	X	X			
75V (240V)		X	X	X	X	X								X
277V (277V)		X	X	X	X	X	X							
<b>ROOF CAPS</b>														
437				X	X					X				
RXII08, RXIISF08	X	X	X					X	X					
RXII12, RXIISF12				X	X	X	X			X	X	X	X	
634M		X						X						
634,644		X	X					X	X					
636, 636AL	X													
RXII18													X	
RXII20														X
<b>WALL CAPS</b>														
441				X	X					X				
613						X	X				X	X		
641		X						X						
642	X													
643			X						X					
<b>IN-LINE ADAPTERS</b>														
961L		X												
981L			X											
982L				X	X									
983L						X	X							
<b>UL RADIATION DAMPERS</b>														
RD1		X	X											
RD2				X	X									
RD3						X	X							
RD for AF80	X													
<b>METAL Grille KIT</b>														
G102													X	
G103														X
MG1		X	X											
<b>DUCT TRANSITIONS</b>														
423				X	X					X				
T81212						X	X				X	X		
<b>DAMPER KITS</b>														
D101														X
<b>VIBRATION DAMPENING HANGERS (4)</b>														
V102	X*	X	X	X	X	X	X	X	X	X	X	X		
V104		X	X	X	X	X	X	X	X	X	X	X	X	X

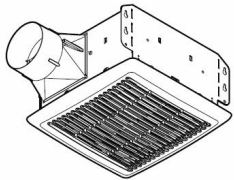
\* Compatible with AF80 but not FF50



## MODEL FF PERFORMANCE

### FF CEILING VENTILATORS

MODEL FF	CFM / Sones at Static Pressure (PS - Inches of H <sub>2</sub> O)										AMPS @ 60HZ/ WATTS	RPM @ 1/8	Voltage	Average Ship Wt. Lbs
	0	1/10	1/8	1/4	3/8	1/2	5/8	3/4	7/8	1				
50	52	49	47	42	29	-	-	-	-	-	0.8/48	1870	120	4
	3.9	4.3	4.4	4.6	5.5	-	-	-	-	-				
100	136	115	109	93	80	65	44	-	-	-	1.1/87	640	120	23
	0.5	0.8	0.9	1.3	1.8	2.3	3.0	-	-	-				
150	181	161	157	141	132	124	114	94	62	-	1.3/100	710	120	23
	1.3	1.4	1.5	2.2	2.6	3.1	3.6	4.1	4.6	-				
200	231	214	210	196	186	177	165	144	113	51	1.8/127	740	120	23
	1.6	1.8	1.7	2.3	2.9	3.5	4.1	4.9	5.3	5.3				
250	272	261	259	250	242	233	218	201	165	99	2.1/166	830	120	23
	2.1	2.3	2.2	2.9	3.3	3.9	4.4	4.8	5.5	5.8				
300	312	309	308	303	296	287	273	254	219	125	2.6/212	905	120	23
	2.8	2.9	2.9	3.3	3.5	3.9	4.3	4.7	5.1	5.6				
400	480	442	434	388	344	299	229	182	114	-	1.4/146	735	120	34
	2.0	2.4	2.3	2.8	3.3	3.8	4.5	4.8	5.4	-				
500	538	520	514	491	463	434	389	339	282	186	2.2/232	810	120	34
	3.0	3.1	3.3	3.6	4.0	4.4	5.0	5.7	6.2	6.7				
700	722	704	701	667	640	607	571	534	453	333	2.9/313	960	120	34
	4.5	4.6	4.7	4.8	5.0	5.2	5.6	6.2	7.1	7.2				
900	918	905	901	877	842	793	725	636	536	390	3.0/306	650	120	64
	3.8	4.0	4.1	4.0	4.2	4.3	4.4	4.9	4.5	5.3				
1500	1578	1526	1513	1438	1371	1285	1198	1103	1000	816	5.0/468	955	120	64
	8.6	8.4	8.4	8.1	7.5	7.0	6.7	6.2	5.8	5.8				



### MODEL AF80 AMCA Certified Performance

AMPS @ 60HZ/WATTS	CFM / Sones at Static Pressure (in wc)								Volts	Nominal (RPM)	Duct Size	Average Ship Wt. (lbs)
	0.0	0.1	0.15	0.2	0.25	0.3	0.35	0.4				
0.3/27	89	79	72	65	58	51	44	36	120	1,110	4" Round	8
	0.6	0.9	-	-	2.1	-	-	-				

Performance ratings include the effects of inlet grille and backdraft damper. Speed (RPM) shown is nominal. Performance is based on actual speed of test. The sound ratings shown are loudness values in fan sones at 5' (1.5m) in a hemispherical free field calculated per AMCA Standard 301. Values shown are for installation Type B: free inlet fan sone levels. Performance certified is for installation Type B: Free inlet, Ducted outlet.



S&P USA Ventilation Systems, LLC., Div. of Soler & Palau Ventilation Group, certifies that the Models FF/FFC shown herein are licensed to bear the AMCA Seal. The ratings shown are based on test and procedures performed in accordance with AMCA Publication 211 and AMCA Publication 311 and comply with the requirement of the AMCA Certified Ratings Program.

### MODEL AF80 HVI Certified Performance

AMPS @ 60HZ/WATTS	CFM / Sones at Static Pressure (in wc)	
	0.1	0.25
0.3/27	80	60
	1.5	-





## MODEL FFC PERFORMANCE

### FFC INLINE/CABINET VENTILATORS

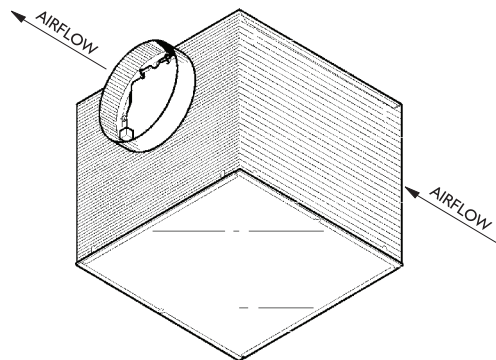
MODEL FFC	CFM / Sones at Static Pressure (PS - Inches of H <sub>2</sub> O)										AMPS @ 60HZ/ WATTS	RPM @ 1/8	Voltage	Average Ship Wt. Lbs.
	0	1/10	1/8	1/4	3/8	1/2	5/8	3/4	7/8	1				
100	121	108	106	97	93	86	70	44	-	-	1.0/87	760	120	23
	0.5	0.7	0.7	1.1	1.4	1.8	2.1	2.4	-	-				
150	153	148	147	140	134	125	111	91	54	-	1.3/100	920	120	23
	0.9	1.0	1.1	1.4	1.6	1.9	2.1	2.2	2.4	-				
200	205	196	195	190	185	175	158	135	96	47	1.8/127	865	120	23
	1.7	1.9	1.9	2.1	2.3	2.4	3.0	3.3	3.4	3.4				
250	248	245	245	241	235	224	208	183	141	84	2.1/166	1005	120	23
	2.0	2.3	2.3	2.8	2.8	3.2	3.4	3.6	3.9	3.8				
300	300	294	293	285	274	259	243	214	168	113	2.6/212	1145	120	23
	2.9	3.0	3.1	3.3	3.4	3.5	3.6	3.7	4.0	3.9				
400	450	415	406	360	313	271	223	167	90	6.0	1.4/146	775	120	34
	1.4	1.6	1.6	1.9	2.2	2.6	2.9	3.4	3.6	3.9				
500	546	526	519	496	472	447	407	364	306	232	2.2/232	890	120	34
	2.4	2.4	3.4	3.7	3.9	3.8	3.9	4.0	4.3	4.3				
700	704	686	681	656	631	604	575	533	480	412	2.9/313	1090	120	34
	3.6	3.8	3.7	3.9	4.0	4.2	4.3	4.4	4.7	5.0				
900	930	902	894	853	807	754	685	587	442	300	3.0/306	810	120	64
	3.7	3.8	3.8	3.8	3.7	3.8	3.9	4.0	4.0	4.1				
1500	1275	1228	1214	1152	1092	1029	958	871	764	631	5.0/468	1055	120	64
	6.8	6.8	6.7	6.5	6.3	6.0	6.0	6.0	6.0	6.1				

Performance ratings include the effects of backdraft damper. Speed (RPM) shown is nominal. Performances based on actual speed of test. The sound ratings shown are loudness values in fan sones at 5" (1.5m) in a hemispherical free field calculated per AMCA Std. 301. Values shown are for installation Type D: ducted inlet fan sone levels. Ratings do not include the effect of duct end correction. Performance ratings include the effects of 18 feet of round inlet duct and, if needed, a rectangular to round duct transition in the airstream. Performance certified is for Installation Type D; Ducted inlet, Ducted outlet.

### FFC CABINET VENTILATORS

MODEL FFC	CFM / Sones at Static Pressure (PS - Inches of H <sub>2</sub> O)										AMPS @ 60HZ/ WATTS	RPM @ 1/8	Voltage	Average Ship Wt. Lbs.
	0	1/10	1/8	1/4	3/8	1/2	5/8	3/4	7/8	1				
2000	1891	1803	1791	1657	1508	1347	1165	808	-	-	5.8/590	965	120	92
	10.3	9.8	9.4	9.0	8.6	9.1	8.9	7.0	-	-				
3500	3605	3498	3452	3278	3073	2983	2679	2429	2093	1693	5.4/1205	1105	240	139
	15.3	14.8	14.5	14.1	13.1	12.8	12.1	11.8	11.9	10.8				

Performance ratings do not include the effects of appurtenances (accessories). Speed (RPM) shown is nominal. Performance is based on actual speed of test. The sound ratings shown are loudness values in fan sones at 5' (1.5m) in a hemispherical free field calculated per AMCA Std. 301. Values shown are for installation Type D: ducted inlet fan sone levels. Ratings do not include the effect of duct end correction. Performance certified is for Installation Type D: Ducted inlet, Ducted outlet.



S&P USA Ventilation Systems, LLC., Div. of Soler & Palau Ventilation Group, certifies that the Models FF/FFC shown herein are licensed to bear the AMCA Seal. The ratings shown are based on test and procedures performed in accordance with AMCA Publication 211 and AMCA Publication 311 and comply with the requirement of the AMCA Certified Ratings Program.

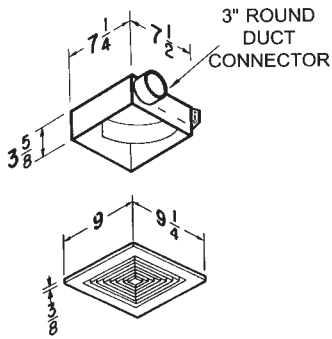




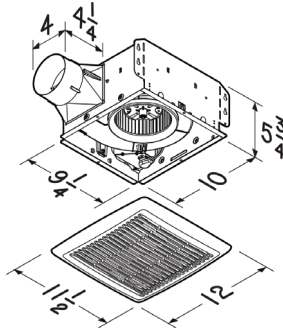
## DIMENSIONS

### CEILING VENTILATOR

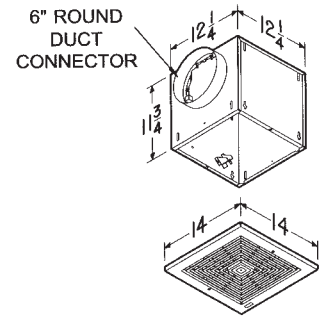
FF50



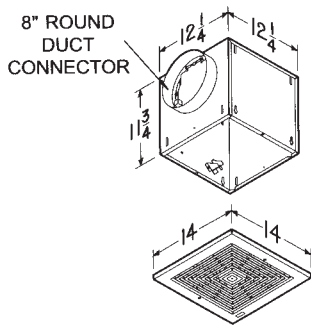
AF80



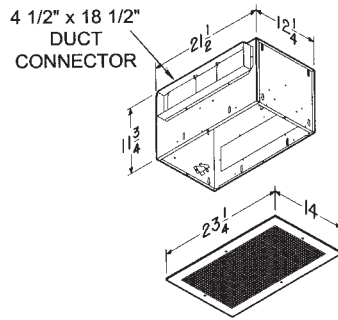
FF100 & 150



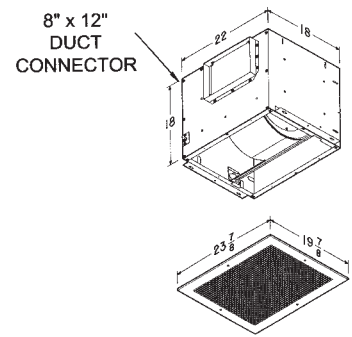
FF200, 250 & 300



FF400, 500 & 700

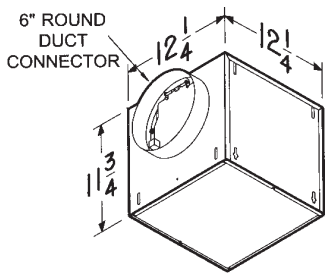


FF900 & 1500

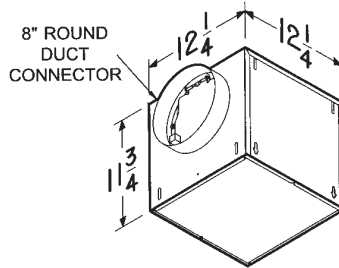


### INLINE/CABINET VENTILATOR

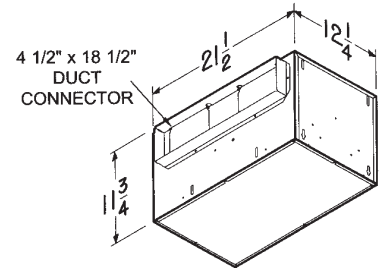
FFC100 & 150



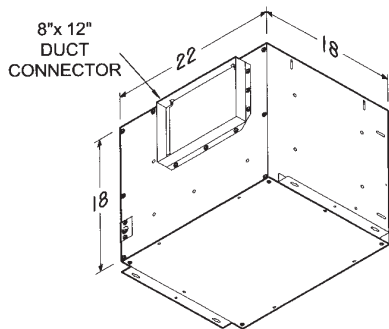
FFC200, 250 & 300



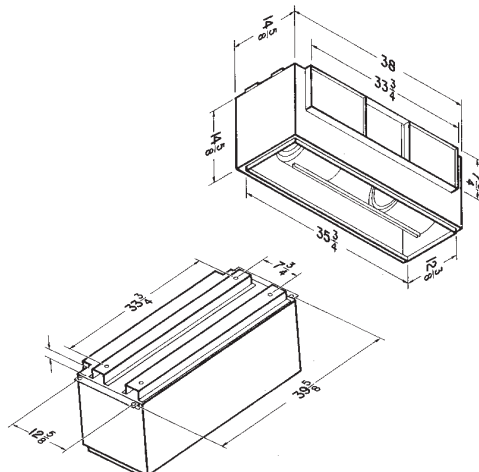
FFC400, 500 & 700



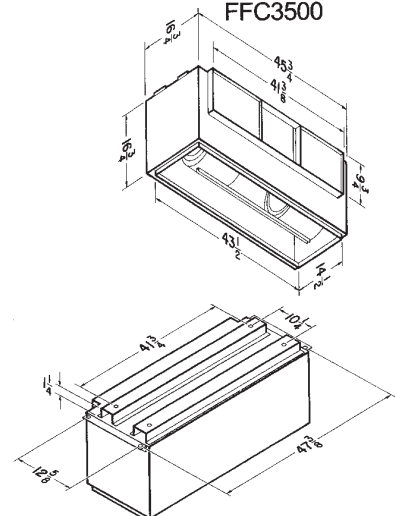
FFC900 & 1500



FFC2000



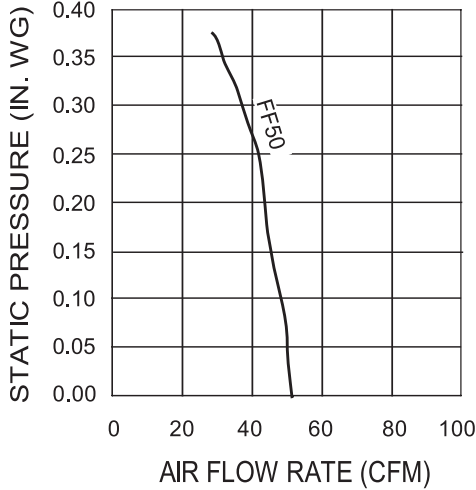
FFC3500



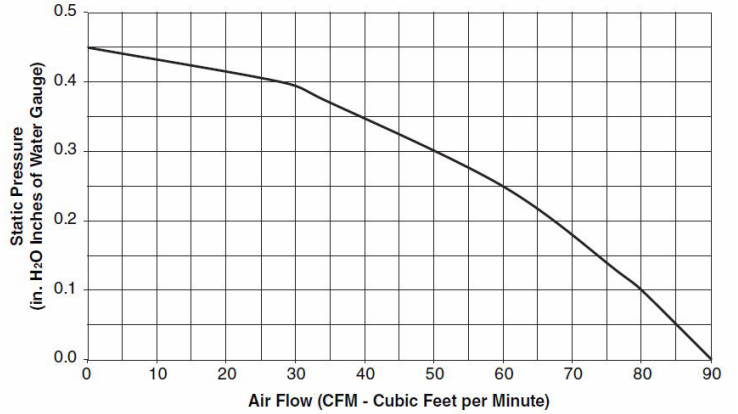


# FF CEILING VENTILATORS QUICK SELECTION GUIDE

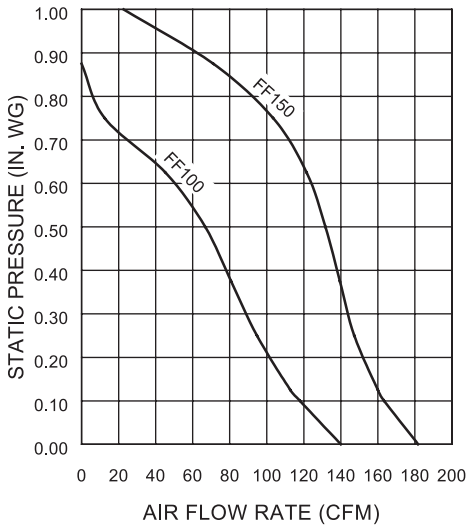
**FF50**



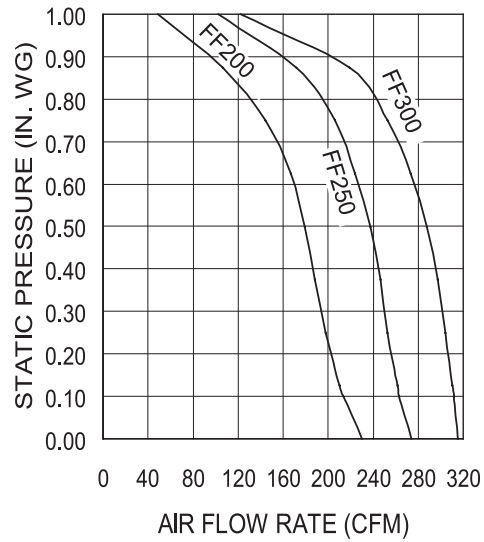
**AF80**



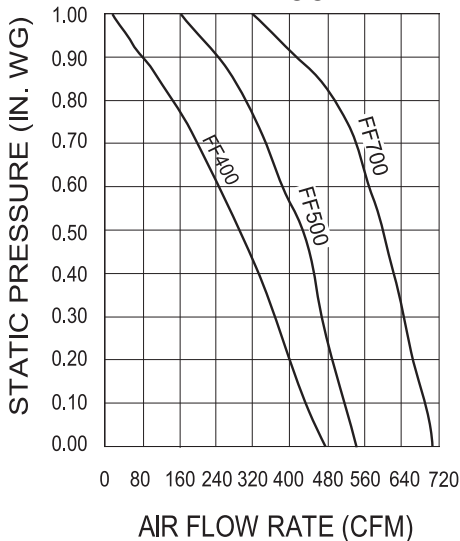
**FF100, FF150**



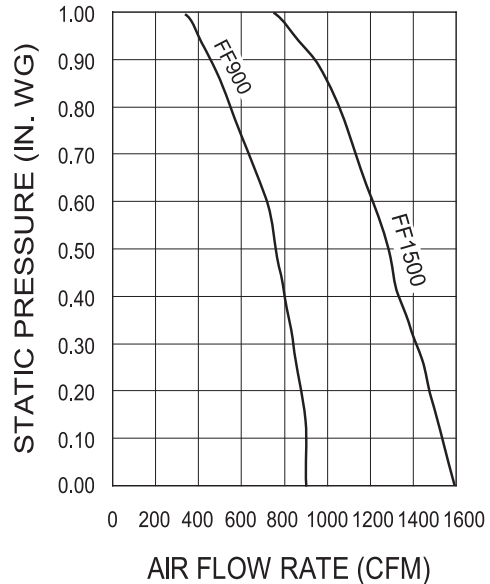
**FF200, FF250, FF300**



**FF400, FF500, FF700**



**FF900, FF1500**

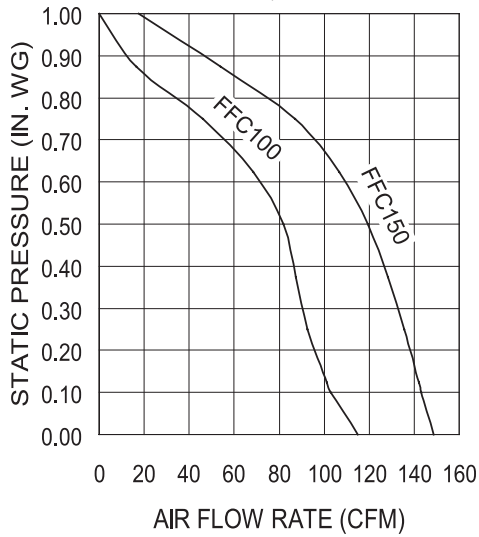


Models AF80, FF50, 100, 150, 200, 250, 300, 400, 500, 700, 900, and 1500 Performance certified is for installation type B: Free inlet, Ducted outlet. Performance ratings include the effects of inlet grille and backdraft damper.

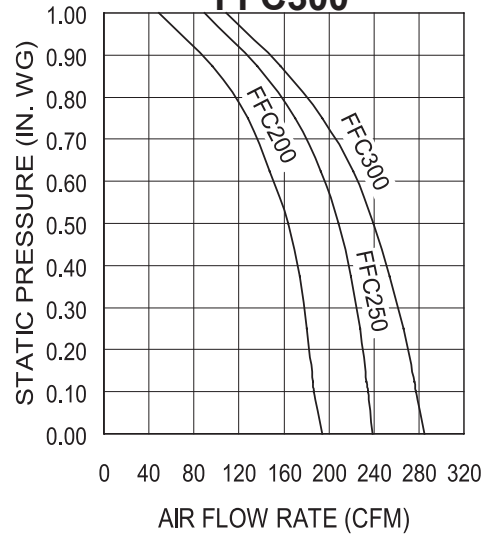


## FFC INLINE/CABINET VENTILATORS QUICK SELECTION GUIDE

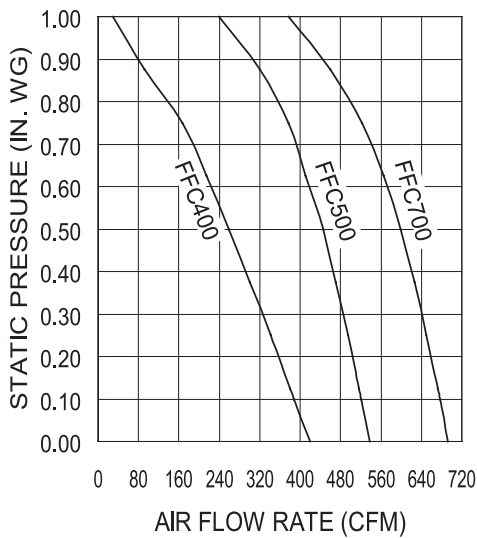
### FFC100, FFC150



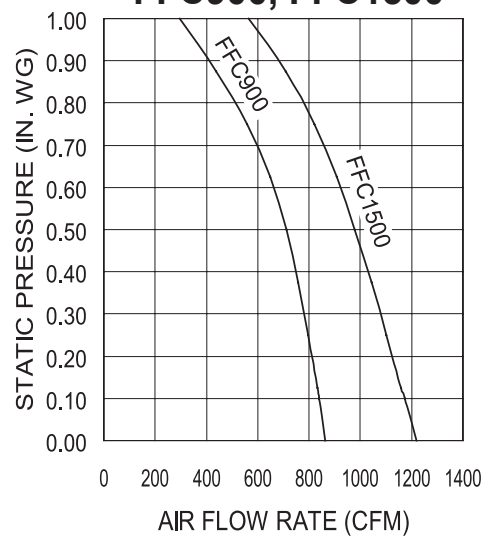
### FFC200, FFC250, FFC300



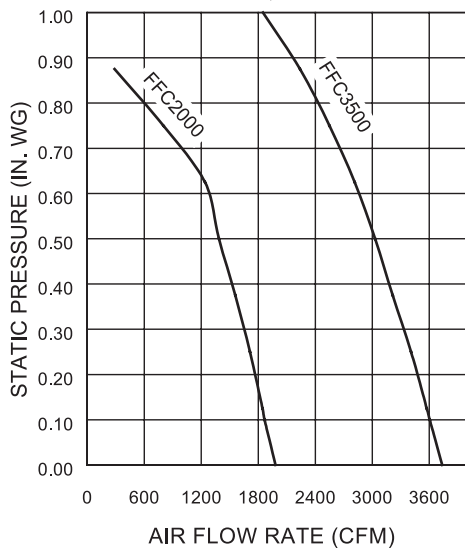
### FFC400, FFC500, FFC700



### FFC900, FFC1500



### FFC2000, FFC3500



### FF & FFC QUICK SELECTION GUIDELINES

1. Locate desired CFM on bottom horizontal axis of graph.
2. Locate system static pressure on left vertical axis of graph.
3. Determine intersection of CFM and static pressure.
4. Select fan curve to the right of this intersection.
5. Solid state speed control may be used for selections left of curve, up to 50% CFM reduction.

Models FFC100, 150, 200, 250, 300, 400, 500, 700, 900 and 1500 Performance certified is for installation type D: Ducted inlet, Ducted outlet. Performance ratings include the effects of backdraft damper, 18 feet of round inlet duct and, if needed, a rectangular to round duct transition.

Models FFC2000 and 3500 Performance certified is for installation type D: Ducted inlet, Ducted outlet. Performance ratings do not include the effects of appurtenances (accessories).